

The Link

Materials Exchange Program

A Quarterly Materials Exchange Newsletter Spring 2003

Board of Directors

GEORGE ACKER
Ogallala
CINDY ADKINS
Cozad
JOE BAXTER
South Sioux City
ROGER BEHRNS
Louisville
MATT BOERKIRCHER
Kearney
CHERYL GERKINS
Lincoln
JIM GOEKE
North Platte
DENNIS GRAMS
Lincoln
ROD HORN
Sidney
CHRISTOPHER JERRAM
Omaha
JOHN KINTER
Columbus
BETH ANN KERNES KRAUSE
Julian
BRUCE LUHR
Seward
TOMAS MILLER
Norfolk
PAUL O' HARA
Lincoln
DAVE OSTDIEK
Gering
MARK PEYTON
Gothenburg
CINDY WAGNER
Ashland
MIKE SCHRAD
Omaha
KEVIN WARNEKE
Omaha
DICK VARNER
Omaha
DAVID STERN, EMERITUS
Omaha

EX-OFFICIO MEMBERS
MIKE JOHANN
Governor, State of Nebraska
MIKE LINDER
Director, Dept. of
Environmental Quality
JANE POLSON
Executive Director

COMPOSTING: A SUCCESS STORY FOR NEBRASKA LANDFILLS

The EPA estimates that 36% of the municipal solid waste generated in the United States is organic material like grass clippings and yard trimmings. Diverting this nearly 75 million tons of organic waste from landfills has been a priority since 1990 when Congress passed the Pollution Prevention Act. Commonly referred to as **P2**, this act demanded a reduction in the growing solid waste stream.

To divert this material from landfills and meet the guidelines of P2, the EPA has actively encouraged the establishment of both backyard and community composting programs. In an effort to increase composting, over 20 states have banned organic waste from landfills.

Nebraska banned grass clippings and yard waste from its landfills in 1994. The state ban is in effect every year from April through November. Shortly after the ban, local communities and counties began implementing large-scale composting programs.

In the spring of 1996, Omaha began a program to compost yard waste picked up from residential, curbside collection. The finished compost, called **OmaGro**, is created from approximately 35,000 tons of yard waste collected annually. According to Gordon Anderson, Omaha's Waste Residuals Manager, this successful composting program typically grows 3-5% every year. *Continued on page 2*

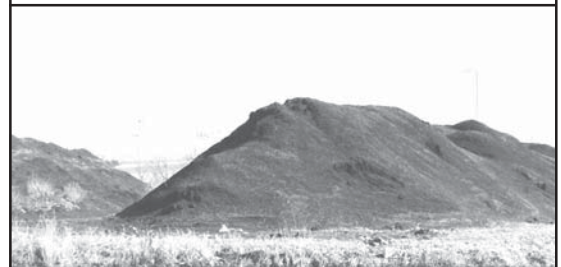
Composting at the Bluff Road Facility in Lincoln



Leaves & grass clippings from curbside collection



Rows of organic material being composted



Compost pile in the final stages



Screening machine sifts compost to finished product

Become a Keep Nebraska Beautiful member today! See membership form on page 12.

Continued from page 1

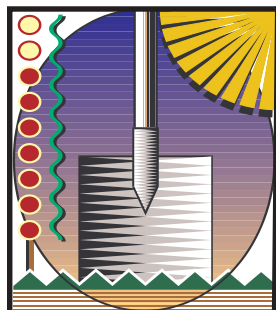
OmaGro is available for retail purchase either bagged or in bulk. Annually, 20,000 tons of compost is available at nurseries and garden centers in Nebraska, Iowa, Kansas, and Missouri. For more information about **OmaGro** and where it can be purchased, you can visit their website at www.omagro.com.

Lincoln began its citywide composting program in 1992. The Bluff Road Landfill located north of Lincoln typically receives 18,000-20,000 tons of grass, leaves, and tree wastes each year for composting. This material is collected from city residents and businesses through curbside collection or self-hauling.

Each year, Lincoln's organic waste is transformed into 12,000 cubic yards of finished compost called **LinGro**. The amount of material composted each year has remained fairly constant since the program began. Steve Owen, the Superintendent of Solid Waste Operations in Lincoln, believes this can be attributed to the city's campaign encouraging backyard composting and discouraging bagged lawn clippings. Lincoln citizens also pay an additional fee for yard waste collection so these waste reduction options can save consumers money.

A limited supply of **LinGro** is available every spring at the Lincoln Transfer Station, 5101 N. 48th Street. This compost is free of charge on a first come, first serve basis. Larger quantities can also be purchased. For more information on purchasing **LinGro**, call the Lincoln Recycling Office at 402-441-7043.

Together, these two composting facilities are responsible for diverting approximately 53,000 tons of material from Nebraska's landfills each year. Successful composting programs in Nebraska and across the country have reduced the municipal solid waste stream, saved thousands of dollars in landfill tipping fees, and created a valuable resource for soil amendments.



Visit our website at www.knb.org for helpful hints about planting a Grow Big Red Garden or

How to Use the Materials Exchange Listings

The listings on the following pages are divided into 17 categories, including "Highlighted Items." The Highlighted Items are those listings that we have received since the last newsletter was published. These listings include material from all of the other categories.

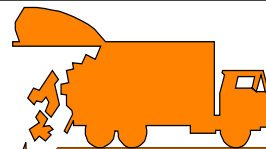
Each category is divided into "Seeking" and "Generating" materials. The listing has a code following the material description. The four letter portion of the code represents the city where the listing originates and is followed by four numbers.

If you see a listing in which you are interested and need additional information, you may call an Exchange Facilitator at 402-486-4622. All we need is the four number portion of the code. That number code allows us to access the listing and provide you with additional information.

There are several reasons why we do not publish contact information directly in the newsletter or on our website. First, most companies and organizations often prefer their contact information (name, email, etc.) not be published in this manner. Second, having interested parties call the Exchange for information allows us to track referrals. The Facilitators follow up and document any matches that have been made as a result of these referrals. This information is compiled to gauge the success of our program.

A common misconception about the Program is that we physically warehouse the materials. The Materials Exchange does not have possession of any listed materials. Our Program provides an information database and shares that information with interested parties. The Facilitators compile the listings, update the listings as new information becomes available, and make referrals based on that information.

If you have any questions about the Materials Exchange Program and how it works, please call us. We would be happy to answer any additional questions you might have.



NEBRASKA HAS 24 PERMITTED SOLID WASTE DISPOSAL SITES. IN 2002, OVER 4 BILLION POUNDS* OF GARBAGE WAS DUMPED INTO THESE LANDFILLS. THE MATERIALS EXCHANGE HELPED DIVERT OVER 11 MILLION POUNDS FROM NEBRASKA LANDFILLS BY REUSE OR RECYCLING. THANKS TO ALL OF OUR PARTICIPANTS FOR MAKING 2002 SUCH A SUCCESSFUL YEAR FOR THE MATERIALS EXCHANGE PROGRAM.

**from the Nebraska Department of Environmental Quality*

Current Listings



To inquire about any items, write Keep Nebraska Beautiful: 3201 Pioneers Blvd., Suite 306, Lincoln, NE 68502-5963; call 1-800-486-4562 (in Lincoln 486-4622); fax (402) 486-4563; or visit our website at: <http://www.knb.org>

Material	Qty.	ID#
Highlighted Items		
New Items Since Winter 2003 Issue		

Seeking

Building materials	All	Linc-4189
Cardboard, office pak	ns	Frem-4173
Chairs-student, large	ns	Harr-4201
Chalkboards, whiteboards	ns	Linc-4196
Clothing, household goods	ns	Linc-4188
Clothing-used	ns	Norf-4186
Computer, Pentium, CD Rom	1/1x	Elwo-4181
Computer/printer-Win95	1/1x	Plai-4190
Computer w/ Win95	1/1x	StPa-4191
Computer, working	1/1x	Lind-4179
Electronic scrap	Lg. quantities	Omah-4207
Gaylords	ns	Linc-4170
Glass for recycling	ns	Linc-4160
Inkjet cartridges-fax, laser, copier	ns	Omah-4178
Lockers for school	ns	Wyno-4164
Medical equipment, used	ns	Norf-4185
Medical equipment, used	ns	Linc-4169
Metal-for recycling	ns	Linc-4159
Microform reader/printer	1/1x	LaVi-4202
Mirror scraps-4x4" or larger	ns	Linc-4213
Office chairs w/o arms, rolling	24/1x	Omah-4166
Organic waste	All	MIMN-4197
Pallets-wooden	ns	Cook-4157
Paper, cardboard, office pak	ns	Linc-4158
Plastic bags	ns	Fill-4172
Plastics for recycling	ns	Frem-4175
Plastic, various types for recycling	ns	BCKS-4176
Science counters for school	ns	Murd-4171
Shredder, office paper	1/1x	Sidn-4162
Slide projector	1/1x	Spal-4156
Storage containers, food grade	ns	Norf-4180
Student desks	ns	Harr-4200
Styrofoam, bubblewrap	ns	Kear-4184
Tin, aluminum	ns	Frem-4174
Tires & rubber-scrap	All	DMIA-4194
Vacuum cleaner-commercial grade	1/1x	Crof-4222
Wire	Lg. quantities	Omah-4207

Generating

Chemicals from circuit board mfg	ns	Linc-4219
Computer-486 (needs network card)	1/1x	Cent-4210
Crumb rubber-for sale	ns	DMIA-4195
Iron and steel scrap	ns	NoPl-4183
Microfiche readers	2/1x	Cent-4209
Pallets	12/mo	Milf-4155
Pallets and wood waste	10-20 t/wk	Hast-4161
Pallets-wooden	ns	Omah-4163
Pallets-wooden, various sizes	ns	Linc-4218
Phone system-Atlas	1/1x	Omah-4221
Plastic spools, spindles	ns	NoPl-4182
Power source platform-wood	ns	Omah-4224
Printers-dot matrix	4/1x	Cent-4211

Material	Qty.	ID#
Shipping/mailling tubes	ns	Linc-4205
Styrofoam-rigid packing material	12-15 plts/1x	Kear-4165
Tarp/sign material, vinyl	ns	Omah-4167
Wood scraps-pine	30,000#/mo	YASD-4212
Zip lock bags	ns	Linc-4187



Ag Products

Seeking

Cattle hides	All	Belv-1051
Fallen farm & feedlot animals	All	Belv-1052
Locker & grocery meat scraps	All	Belv-1053
Organic products	Lg. quantities	Xxxx-3932
Packing house by-products	All	Belv-1054
Packing house by-products	All	Pend-2478
Straw bales—square wheat, oat, or rye	ns	Linc-1519

Generating

Cornstarch	100 t/mo	Xxxx-3576
Food waste	Lg. quantities	Linc-3949
Syrup products	50 t/mo	Xxxx-3577

Chemicals

Seeking

Chemical waste	ns	Omah-3513
Chemicals-bulk organic or inorganic	ns	NERI-3140
Cleaners, fertilizers, solvents, etc.	ns	Colu-1034
Chemicals for resale	ns	HPNJ-2391
Ferric chloride, spent	ns	DPMO-4051
Hazardous waste, chemicals, pesticides	Any	CAMA-4040
Hazardous chemicals, acids, alkalis	Lg. quantities	SLMO-2820
Hazardous materials	ns	Linc-3051
Lime-Ca(OH)2	5,000#/mo	Blai-2016
Lime by-product	Lg. quantities	Scri-2166
Polyols & isocyanates	Lg. quantities	ORAN-3977
Solvents, detergents, dyes, pigments	ns	WANJ-3596

Generating

Antifreeze-used	2 drms/mo	Colu-4096
Isopropyl alcohol, 67-70% pure	2-3 drums/yr	Colu-1513
Methanol	1 drm/mo	Colu-4033
NaOH solution	5,000 gal/wk	YASD-3562
Non-acetone polish remover	3,000 gal/1x	Omah-3816
Polyols & isocyanates	Lg. quantities	ORAN-3978

Please visit our website at knb.org

t=ton
g=gram
L=liter

yd=yard
qtr=quarter
gd=gaylord

ml=milliliter
wk=week
plts=pallets

semi=semi-truck
cu. yd.=cubic yard
dmpr=dumpster

cont=container
1X=one-time amount
ns=amount not specified

Material Qty. ID#

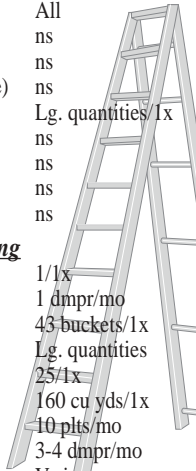
Construction Materials

Seeking

Any usable materials	ns	Colu-1038
Asphalt shingle scrap	Lg. quantities	Wave-3950
Bricks	ns	Linc-2865
Construction materials-insulation, windows, siding	ns	Linc-3139
Construction materials-anything usable	ns	Omah-3319
Construction material-doors, windows, appliances	1x	Roca-3859
Doors, windows, cabinets	ns	Linc-1517
Hardwood gym flooring-used	All	Wyno-1264
Lumber and other shop supplies	ns	Gibb-3664
Plywood sheets, 2x4s, doors	ns	Kear-3807
Posts (cedar logs, metal irrigation pipe, oil pipe)	ns	Linc-2518
Roofing material	Lg. quantities/1x	Brow-3962
Rubble-dirt, asphalt, concrete	ns	Linc-3120
Shingles, tar paper	ns	Linc-3970
Shop class materials	ns	Elba-3671
Usable construction supplies & materials	ns	Beat-2643

Generating

Brick school house and all contents	1/1x	Blue-3745
Cabinet material scrap w/ formica	1 dmpr/mo	GrIs-1253
Carpet adhesive-water based, solvent free	43 buckets/1x	Omah-3590
Concrete block pieces	Lg. quantities	Omah-1397
Concrete bunker silo wall supports	25/1x	Chap-3872
Concrete, rubble	160 cu yds/1x	Chap-3871
Drywall scrap	10 plts/mo	GrIs-1249
Hardboard siding scrap	3-4 dmpr/mo	GrIs-1250
Laminated sink cutouts, approx. 22" x 33"	Varies	Omah-1632
MBO board-20"x48"x1/2"	1000/1X	Linc-3501
OSB (wafer board) scrap	3-4 dmpr/mo	GrIs-1251
Particle board scrap	2-3 dmpr/mo	GrIs-1252
Trusses & rafters w/ plates—broken	1 dmpr/mo	GrIs-1258
Vinyl siding scrap—all colors	3-4 dmpr/mo	GrIs-1256
Window pane glass	240 panes/1x	Colu-3436



Containers & Pallets

Seeking

Bags-lined & unlined, paper	ns	Geil-3938
Boxes-cardboard, various sizes	ns	Beat-2065
Boxes-cardboard, 16"x16"x30"	300/yr	Milf-1545
Boxes-cardboard, 16"x16"x12"	Lg. quantities	Suth-2116
Buckets-5 gal w/ lids	ns	York-3087
Buckets-5 gal w/ lids	100/6mo	Hast-3856
Buckets-5 gal, food grade	20/yr	Raym-3767
Buckets-5 gal, plastic, prefers food grade	ns	Linc-3206
Buckets-5 gal, plastic, w/ handles	ns	PIDa-4063
Containers-totes, tins, buckets	ns	Bell-4088
Crates-Wood	12/mo	Linc-2788
Drums-fiber, 7.5 gal w/ lid	ns	Norf-4092
Drums or buckets—plastic, 5 to 55 gal	All	Kear-1102
Drums-plastic, 30 gal	10-20/1x	Linc-3468
Drums-plastic, 20 & 35 gal	ns	Norf-2732
Drums-plastic, 55 gal	ns	Linc-1423
Drums-plastic, 55 gal	ns	Lexi-4118
Drums-fiber or steel, 55 gal	ns	Kear-3811
Drums-steel, 55 gal	ns	Rose-3958
Drums-plastic, 55 gal	All	Linc-1872
Drums-plastic or steel, any size	ns	Hast-2165
Drums-55 gal., plastic, reg & open top	All	Vall-1003
Drums-steel, 55 gal w/ ring lid	ns	Beat-2566
Drums-steel & plastic, 35 & 55 gal	All	FtCa-1276
Drums-steel, 55 gal w/ snap ring lids	50-100/wk	SoSc-3218
Drums-steel & plastic	All	Omah-1173
Drums-steel, w/ lids	70-80/yr	Davi-3586
Gaylords	ns	Wilc-3747
Gaylords	ns	DRFL-3563

Gaylords	ns	Norf-3463
Gaylords	100/mo	Linc-3404
Polytotes-225 to 345 gal	ns	Omah-3726
Totes	ns	Omah-3250

Pallets—Wood—Seeking

All	BISp-1391	48x48, 200/mo	Linc-2789
All	SHIA-3824	32x40, 200/mo	NeCi-2262
Lg. quantities	BRIA-1945	48x48-Varies	Linc-2647
All, only 40x48	Frem-1057	36x36, 42x48, 200/mo	GrIs-2816
All, only 40x48	GrIs-1394	48x40, All	Omah-1381
36x40-lg. quant.	Hast-1626	Various, min. 32x30	Omah-2060
300/mo, 4 way, 48x40	Linc-2975	48x48, ns	Omah-3093
Trailerloads	Linc-2260	40x48, lg. quantities	Omah-3196
		48x48, oak, 50/yr	Prin-2515

Generating

Boxes-20"x 40"x 20"	40-50/yr	Milf-1546
Boxes-18"x 18"x 18"	30-40/mo	Omah-1753
Boxes, various sizes	ns	Omah-1886
Buckets-metal, 2.5 gal, with handle	10/wk	Linc-3308
Buckets-3.5 gal, food grade	ns	Linc-4042
Buckets-black, plastic, 5 gal	50-100/mo	Omah-1795
Buckets-plastic, 5 gal	30/mo	Omah-3360
Buckets-5 gal metal w/ lids	5-10/wk	GrIs-1858
Buckets-#2 plastic, black	50-100/mo	Omah-1795
Buckets-5 gal	24/wk	Omah-2011
Buckets-plastic, 5 gal	2/wk	Linc-3718
Burlap bags-originally contained coffee	2000/mo	Omah-3392
Crate, pallet lumber	ns	Xxxx-3893
Drums-fiber	200-300/yr	Omah-1751
Drums-steel w/ 2 bungholes	25/mo	Norf-3939
Drums-steel, 35 gal	ns	Linc-1642
Drums-fiber w/ lids	20/mo	Omah-3817
Gaylords	ns	DRFL-3900
Gaylords	40/wk	Omah-1976
Gaylords	30-50/mo	GrIs-3728
Kegs, 4'x4' hexagonal shape	Varies	Cozd-2142
Pallets, plastic	ns	Frem-3957
Pallets-#2 plastic, 12"x 23"x 2"	500-600/yr	Cozd-1364
Poly totes-275-345 gal	ns	Omah-3726
Tote bags-2000#, nylon or plastic	12/wk	SCIA-3236
Totes-275 gal on pallet	2/mo	Cozd-2017
Wooden spools, pallets	50/mo	Colu-3792

Drums, 55 gal--Generating

Fiber, ns	Linc-4041	Plastic, 50-100/mo	York-4064
Plastic, ns	Norf-3487	Plastic, ns	Norf-3794
Plastic, 10/wk	Omah-2010	Plastic, 25/mo	Cret-3549
Plastic, 30/yr	Omah-3101	Plastic, 20-25/mo	WIND-3398
Plastic, 100/1x	SoSc-3219	Steel, 4/mo	Harv-3802

Pallets—Wood—Generating

20/mo	Aubu-3610	Various sizes, 27/yr	Sewa-3994
Odd sizes, 50/mo	Cozd-1363	Various sizes, 50/mo	Colu-3792
Various sizes, 30-50/mo	Frem-1431	Various sizes, 2 lg dmpr/mo	Norf-1639
36x36 & 48x48, Varies	Frie-1408	Various sizes, 3-4 t/mo	Norf-3397
40x48, 4 way, 100/mo	Gene-2892	Various sizes, 600/yr	Omah-2861
48x48, 200/yr	GrIs-1754	Various sizes, 80 cu yds/wk	Colu-1998
40x48, ns	Hast-3160	Irreparable, 2 dmpr/mo	Omah-1584
40x48, 6-10/day	Xxxx-4113	48x36, Lg. quantities	Omah-2226
10-20/wk	Linc-1171	Various sizes, 20/wk	Omah-3414
36x48 & 36x36,ns	Linc-3260	Various sizes, 500/mo	York-2443
400/mo	McCo-1284		

To find out how your organization can save money while helping to preserve the environment, call
Keep Nebraska Beautiful.
1-800-486-4562 • visit our website at www.knb.org

Material	Qty.	ID#
Durables & Electronics		

Seeking

Cell phones-working & non-working	All	Crete-4012
Central office switches	All	DUON-3530
Circuit boards	All	Kear-1101
Circuit boards-electronics	ns	Linc-4089
Copier-desktp	1/1x	Linc-3588
Copier-desktp	1/1x	Arca-2269
Electronics, integrated circuits, computer parts	All	FPIL-1224
Electronics & computer equip, for recycling	Lg. quantities	CHIC-3974
Electronic scrap for recycling	All	Omah-3459
Electronic equip-working & non-working	ns	Linc-3376
Fax machine	1/1x	Linc-4138
Hardware, software	Any	Linc-3232
Micro film reader/printer	1/1x	Morr-3372
Pen plotter for CAD	1/1x	Hast-3717
Printers, ink jet	ns	Omah-2671
Printers-laser	1-2/1x	Omah-3630
Printer-laser	1/1x	Linc-4139
Radio-base station & radios	1x	Beat-3602
Telephone & computer mainframe equip.-Scrap	All	Kear-1246
Telephone system w/PBX	1/1x	Bart-3681
Scanner	1/1x	Linc-4137

Computers-Seeking

486 or better, 2/1x	FtCa-3489	Pentium w/ CD-Rom, 10/1x	Linc-3478
486 or better, 10/mo	Omah-2609	Pentium, working	Omah-2622
486 or better, laptop,lea/1x	Linc-3979	Pentium, 6/1x	Linc-3425
Computers, Lg. quantities	SPMN-3911	Pentium w/ CD-Rom	Omah-3589
Computer w/ printer	Omah-4143	Pentium	Omah-2688
Computer w/ Win95	Beat-3658	Pentium, any	Dent-3666
Computer, Win95 or better	Linc-4154	Pentium-complete	Omah-3651
Computers, 486 or better	Linc-2728	Pentium, 40/yr	O'Ne-3695
Computers w/CD-Rom	Fair-3409	Pentium-complete	Linc-3691
Computers w/CD-Rom	Coza-3734	Pentium w/Win95, better	Xxxx-3089
Computer equip, ongoing	Papi-3861	Pentium, ns	Hend-2104
Computer, media equip., ns	Beat-2331	Working & non-working	Linc-3886
Computer w/ CD-Rom, ns	Kear-3804	Working & non-working	Linc-2728
Computer w/ CD-Rom, 6/1x	Wake-2814	Working & non-working	Linc-3890
IBM comp., Pent, 20/qtr	Omah-3860	Working & non-working	Omah-3913
Laptop, 1/1x	Hart-4120	Working & non-working	Omah-2915
Laptop, 1/1x	Linc-4140	Working & non-working	Omah-3459
Parts, Any	Kear-1412	Working & non-working	Linc-4028
Parts, Any	Wave-4107	Working & non-working	STPA-4021
Pentium, printer, 1/1x	Crof-3494		

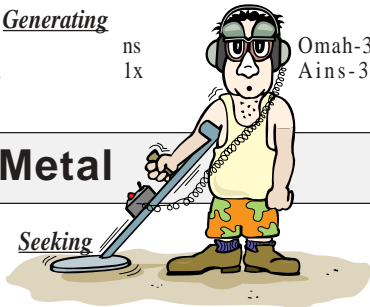
Generating

Computers, 386, 486, printers	ns	Omah-3791
Computers, 4 laptops, 3 Macs to sell	1x	Ains-3842

Metal

Seeking

Aluminum, steel, cans, cars	Lg. quantities	Omah-4144
Aluminum, tin	Lg. quantities	Hast-3917
Aluminum, tin	Lg. quantities	Beat-3921
Aluminum	Lg. quantities	NHIA-3924
Automobiles for scrap	ns	Linc-1953
Brass, copper, aluminum, lead	ns	Norf-1952



Material	Qty.	ID#
Copper-bearing items	ns	DUON-3882
Ferrous & nonferrous	All	Kear-1978
Ferrous & nonferrous	All	Linc-1955
Ferrous & nonferrous	All	Omah-2481
Ferrous & nonferrous	All	Omah-1425
Ferrous & nonferrous, copper, brass	ns	Linc-3874
Grindings, powders containing metal	25 t/wk	HILL-3954
Metal scrap-copper, zinc, nickel, aluminum, etc.	ns	DUON-3529
Metal scrap, copper, #1, #2, #3, insulated wire	ns	DUON-3881
Metal scrap-tin cans	Any	Omah-3931
Metal, scrap for recycling	Lg. quantities	CHIL-3827
Nonferrous	All	Kear-1099
Scrap metal	All	Hast-2602
Scrap steel, metal plate	ns	Hast-4000
Scraps for school	ns	Colu-1037
Solder dross	All	Kear-1273
Stainless steel & nickel alloy	ns	DUON-3883
Tin, ferrous and nonferrous	ns	Cook-3453
Wire-insulated copper & aluminum	All	Kear-1268

Generating

Aluminum dust	7000-8000#/yr	Davi-3585
Grinding wheels	20,000#/mo	Xxxx-4114
Iron dust-Wheelabrator	277 t/yr	Xxxx-1205
Metal sludge/swarf-grinding	1800 t/yr	Xxxx-1206
Scrap from fireplace installation	ns	Linc-3801
Zamac and lead ingots, copper & alum. choppings	ns	DUON-3533

Oils & Waxes

Seeking

Grease-used, kitchen	All	Belv-1055
Oil-animal or vegetable	All	Belv-1056
Oil-used hydraulic, auto	Lg. quantities	SCIA-1087
Oil-used	ns	Alia-3832
Oil-used, non-synthetic	4,000 gal/yr	Omah-1946
Oil-used	Lg. quantities	Hast-3736
Wax-food grade	ns	Axte-4001

Other

Seeking

Art supplies	ns	Linc-3934
Art supplies	All	Omah-1460
Art supplies	ns	Linc-3668
Architectural antiques	ns	Linc-3503
Batteries-all	All	Linc-1954
Batteries	ns	Hast-3518
Batteries-from autos, sealed lead/acid	All	Linc-2491
Batteries	Lg. quantities	SPMN-3912
Binoculars	36/1x	Elwo-1410
Bird guides	36/1x	Elwo-1404
Canvas, art brushes, ink	ns	Omah-3902
Catalytic converters	ns	Kear-1209
Child development center materials	ns	Linc-3426
Craft items-paper, wood	ns	Linc-4048
Drums, any type of percussion instruments	1/1x	Elwo-3869
Educational materials, books, software	ns	Kear-3809
Equine materials-used bridles, horse blankets, etc.	ns	Kear-3808
Fluorescent lamps	All	SPMN-2173

Please visit our website at knb.org

Materials Exchange Disclaimer: Information provided through this database is supplied by the lister of the material. Keep Nebraska Beautiful is not responsible for any warranty, expressed or implied, as to the accuracy of the material description, the suitability of a particular use, or the saleability of any material offered through this service. It is the legal responsibility of each party to determine whether a listed material is a hazardous waste or a hazardous material. Both hazardous and solid wastes must be managed in accordance with all relevant regulations and laws. Keep Nebraska Beautiful reserves the right not to list a material, to delist a material, or to edit information provided by the listing party.

Material	Qty.	ID#
Fuel materials w/ high BTU value	25 t/wk	HILL-3953
Gases	All	PUGO-4069
Ion exchange resin	ns	ROIL-1531
Laser, copier, inkjet cartridges-empty	Lg. quantities	MINN-3963
Mercury barometers	ns	Colu-3109
Mill scale, fly ash	25 t/wk	HILL-3955
Nebraska flag	1/1x	Linc-3634
Potter's wheel	1/1x	Omah-3903
Reverse osmosis membranes-8" & 4"	ns	ROIL-1529
Rubber matting for outdoor playground	1/1x	Hart-4121
Textbooks, 1996 or newer	ns	Kear-4147
Wall maps & charts-current	ns	Omah-2099

Generating

Adhesive stock-pressure sensitive	Lg. quantities	DPMO-3365
Diatomaceous earth	100 t/mo	Blai-2015
Ink from newspress	70 gal/yr	Waho-2093
Ion exchange resin (used cation anion, mixed bed)	ns	ROIL-1530
Pressure sensitive adhesive stock	Lg. quantities	DPMO-3365
Railcar hatch covers-fiberglass	ns	Linc-1793
Reverse osmosis membranes-used, 8"	ns	ROIL-1528
Silicones (sludge-like)	2000#/yr	Colu-1643
Steel grain bins	2/1x	Chap-3873
Wallpaper books-outdated	ns	Linc-3646
Wine bottles-blue, various sizes	200/mo	Raym-2382
Wood ash	1 t/wk	Cret-4123

Paint, Glass, Coatings

Seeking

Float glass	ns	MUIA-1949
Glass-clear cullet	200 t/mo	DWIA-1950
Glass-recyclable	ns	Blai-2793
Glass-recyclable	any	Linc-3652
Glass-recyclable	Lg. quantities	Beat-3919
Glass-recyclable	Lg. quantities	Omah-3929
Paint (any color)	ns	Colu-1035
Paint-latex	10 gal/1x	Beat-4099
Paint-yellow striping paint	ns	Beat-3600
Paint	ns	Rose-3959
Paint, oil based	250 gal/1x	Brow-3961
Waste powders-reclaim and spray	Varies	GRMI-1820
Virgin powder coatings	>50 lbs	GRMI-1818

Generating

Glass-mixed	1000#/mo	Plym-1386
Glass-broken mirror glass	30 t/mo	DWIZ-1957
Paint-various colors	1500 gal/1x	Omah-1200
Paint-various colors & finishes	Lg. quantities	Omah-3591
Paint	30 gal/qtr	Linc-2867
Paint-latex	20 gal/1x	Linc-3256
Paint-blue (Diamond Vogel)	55 gal/1x	PEIA-2487
Powder coatings	ns	GRMI-1819
Powder paint	200#/mo	Kear-2636

Paper & Cardboard

(For Cardboard boxes see: Containers & Pallets)

Seeking

8.5"x11" paper-may be used on one side	ns	Hend-2105
Books for children	ns	Linc-3878
Cardboard for binding	ns	Linc-3176
Cardboard	ns	GEIL-3937
Cardboard, paper products for schools	ns	Linc-3117
Cardboard, envelopes-for school projects	ns	Linc-3660
Cardboard & paper, baled	ns	Omah-1814
Endrolls-paper for art projects	ns	Linc-4073
Envelopes-various sizes	50/mo	Xxxx-3985
Fine paper, corrugated, chipboard	Lg. quantities	Omah-3967

REDUCE-REUSE-RECYCLE

Material	Qty.	ID#
Matte board, newsprint, art supplies	ns	Linc-3880
Paper & cardboard, newspaper	Lg quantities	Beat-3920
Paper & cardboard	Any	Linc-2498
Paper & cardboard	Any	Blai-3904
Paper, fibers-for recycling	Any	NHIA-3946
Paper, waste, any grade	Lg. quantities	Wilc-3746
Paper-any grade waste	Any	MIFL-3830
Paper-plain white, 8.5x11	ns	Orle-4052
Paper-8.5x11, used on one side	ns	Hend-2105
Paper products for lessons and art projects	ns	Linc-3460
Paper & paper products	All	Frem-1934
Paper & cardboard	ns	Omah-1939
Paper & paper products (books, stationery, etc.)	ns	Omah-1947
Paper-shredded	Varies	Beat-2108

Generating

Books-older	ns	Orle-3648
Cardboard-8'x12' pieces	300-400#/wk	Belv-2000
Cardboard mailing tubes, 36" long	ns	Chad-2131
Cardboard roll tubes	350-500/wk	Frem-1228
Cardboard-shredded, waxed & non-waxed	ns	Linc-4050
Cardboard	Lg. quantities	GrIs-3484
Cardboard-corrugated	3 gd/mo	Omah-3361
Cardboard-corrugated, waxed	5-10 t/mo	Frem-3370
Cardboard-flattened	ns	Omah-2434
Cardboard cores	500/yr	Waho-2092
Computer paper-shredded	Varies	Colu-1198
Encyclopedia sets-used	2 sets/1x	Orle-4053
Paper-one-sided, used	ns	Linc-4072
Paper-one-sided, used	ns	Omah-4145
Paper-bags, multi-layered	500#/wk	Plym-1867
Paper-shredded	ns	Axte-4133
Waxed paper-Kraft, brown, 20"x24"	ns	Kear-2237

Plastics

Seeking

#1, #2, plastic film	Lg. quantities	Linc-3653
#1 and #2 plastics	Lg. quantities	Wilc-3915
#1-7	All	MAFL-1424
#2 HDPE, possibly others	ns	MAIA-1948
Any	Lg. quantities	DRFL-3110
Any	Lg. quantities	MENY-2537
Bags-plastic, 55 gal	ns	Linc-3293
Bubble wrap/packing peanuts	ns	Linc-1248
Bubble wrap/packing peanuts	Lg. quantities	Edga-4004
Bubble wrap/foam wrap sheets	1 roll/mo	Xxxx-3984
Bubble wrap	Varies	Linc-3971
Bubble wrap/packing peanuts	ns	Linc-3833
Carpet pads-polyurethane foam	All	Omah-1623
HDPE-granulated, mixed colors	Varies	SIIA-2169
HDPE and LDPE scrap-Dow #2045 or close match	ns	Linc-3334
Moldable plastics	ns	Hast-3999
Nursery pots-plastic	ns	Beat-4034
PP/PE scrap, primarily diaper scrap	Lg. quantities	JACK-3884
Packing peanuts	30 cu ft/wk	Belv-2176
Packing peanuts	ns	Linc-3312
Packing peanuts	ns	Beat-2064
Plastics	ns	GEIL-3936
Plastics-various types	Lg. quantities	Linc-4124
Plastics-recyclables	ns	Beat-3202
Plastics-recyclables	ns	NHIA-3368
Plastics-recyclables	ns	Blai-3905
Plastics-recyclables	Lg. quantities	Linc-2499
Plastic-#4-Polyolefin resins	Lg. quantities	WINC-4038
Plastics-recyclable	Any	Omah-3930
Plastics, PVC, etc.	ns	DUON-3531
Plastics	Lg. quantities	Omah-3846
Plexiglass	Any	Rose-3572
Polyethylene bags and zip lock bags, large	ns	Linc-2546
Polyethylene-shrink wrap materials	ns	PAIL-1942
Polystyrene-packing peanuts	ns	Beat-2064

Material	Qty.	ID#
Polystyrene-packing peanuts	ns	Linc-3312
Scraps for school	ns	Colu-1031
Styrofoam, packing peanuts	ns	PIDa-4057
Various	ns	CLIA-1936
Various	>1,000 lbs	GCNY-1958
Zip lock bags	ongoing	Linc-3850
Zip lock bags-10x14	Lg. quantities	Linc-1536
Zip lock bags	ongoing	Linc-3867
Zip lock bags	ns	Linc-1815

Generating

ABS plastic sheets, 24x14	130/1x	Kear-3966
Acrylic scraps, sheets	Ongoing	Xxxx-3892
Adhesive films	ns	Colu-2334
Banding material-green	80 gal/wk	Omah-1796
Bubble wrap & foam wrap sheets (24x24x1/8)	ns	Linc-3228
Bubble wrap/peanuts	5 bxs/day	Linc-3805
Clear plastic liner on rolls	50,000#/yr	Vall-3857
Copier covers & cassettes	500#/qtr	Frem-1471
Esterfoam & ethafoam, sizes vary	1 lg. dmptr/mo	Hast-1636
Fiberglass rebar scraps-1' to 15' long	500#/wk	Sewa-3865
HDPE-post-industrial scrap, black	ns	Linc-2014
Matte liner .002 thick	17,000#/yr	Vall-3858
PP/PE-diaper scrap	600,000#/mo	WHIT-4039
Packing peanuts	150 gal bag/mo	Hast-1870
Packing peanuts	1 bag/wk	Linc-3696
Packing peanuts	6-12 bags/mo	Omah-1885
Plastic bags-various sizes	25,000/1x	Omah-4022
Plastic regrind-1/4" pellet	ns	Omah-2936
Polyethylene-sheets	ns	Kear-2236
Polypro bags	ns	Linc-3896
Polypropylene, polyester	300,000#/yr	Vall-3779
Polywrap plastic (shrink wrap, not shrink)	20 drums/wk	Kear-2637
PVC-rigid white scrap	4 t/mo	Paxt-2068
PVC pipe-various sizes and colors	ns	Benn-2459
PVC-scrap, sawdust to 2' length	10,000/yr	GrIs-3705
Shrink wrap	Lg. quantities	GrIs-3482
Stretch wrap	20 drums/wk	Kear-2638
Styrofoam sheets	ns	Linc-4049
Various	ns	Linc-4124
Zip-lock bags-3"x6"	300/mo	Linc-1521
Zip-lock bags-small	50/wk	Linc-1555

Rubber

Seeking

Inner tubes	All	CANA-1422
Matting-used	ns	Schu-2182
Rubber	Lg. quantities	Omah-3910
Rubber-cured or uncured, inner tubes	ns	DUON-3532
Scraps for school	ns	Colu-1031
Tires-used	ns	Linc-3635
Tires-used	All	Hast-1455

Generating

Cork rubber scraps	40,000#/mo	NeCi-2416
Rubber product	3 t/day	Kear-2238
Scrap-cured	10,000#/wk	McCo-1283
Tires-used truck	ns	Auro-2322

Sand, Gravel, & Clay

Seeking

Clay, dirt, sand	ns	Colu-1974
Clay for art projects	ns	Omah-3901
Clay for schools	ns	Colu-1032
Sand & gravel for schools	ns	Colu-1033
Sand for preschool	ns	Linc-2797

Material	Qty.	ID#
Generating		
Blasting grit	80-100 t/yr	Linc-2343
Molding sand	Lg. quantities	Hast-3231
Used glass blasting material	Lg. quantities	Xxxx-3049

Surplus Equipment

(See also Durables & Electronics)

Seeking

Aircraft tow, gas-powered	ns	Beat-3601
Appliances-major	All	Frem-1909
Appliances	Any	Omah-2482
Art supplies, lumber, woodworking supplies	ns	Linc-3237
Atlas	1/1x	Linc-3633
Auxiliary plastic processing equip	1/1x	Hast-4128
Baler	1/1x	Omah-3933
Balers, recycling equipment	All	DRFL-4068
Banquet/conference tables, 6'-8'	10/1x	Hart-4122
Binders, 3-ring	ns	Linc-2183
Book rack-upright, for paperbacks	1/1x	Plym-4066
Bookshelves	ns/1x	Alli-3116
Carousel projector	1/1x	Xxxx-3033
Chairs-office	2/1x	Omah-4087
Chairs-secretarial	3/1x	Orle-3647
Children's scissors	30-40/1x	Norf-3615
Computer tables	4/1x	Linc-3632
Computer desks, chairs	ns	Linc-4153
Commercial beverage cooler, bar stools, chairs	ns	Kear-3741
Conference table and chairs	1x	Omah-3789
Conveyors, wood grinders	ns	Linc-3662
Copier-floor type	1/1x	Linc-4149
Cubicle partitions	ns	Omah-3431
Desks	1/1x	Linc-4142
Desks w/ drawers, task chairs, computer tables	1x	Omah-3752
Dishes & Glassware	ns	Linc-2397
Display racks for clothing	ns	Linc-4152
Easel	1/1x	Xxxx-3034
Educational materials	ns	Linc-3426
Electrical discharge machine	1/1x	Hast-4126
Employee lockers	2 sets/1x	Norf-3841
File cabinets, fire-proof	ns	Omah-2970
File cabinets, fire-proof	ns	Linc-4054
File cabinets-4 drawer	1/1x	Linc-4141
File cabinets-3 or 4 drawer	3/1x	Sewa-3997
File cabinets-2 or 4 drawer, letter size	ns	Linc-3552
File cabinet-2 or 4 drawer	6+/1x	Frem-3659
File cabinets	2/1x	Beat-2753
File cabinets-4 drawer	2/1x	Beat-2737
File cabinets, computer desks, office chairs	Varies	Beat-2625
Folding chairs, tables	1x	Crof-3758
Folding machine for brochures	1/1x	Plai-3951
Folding table & chairs	ns	Linc-4148
Furniture-bar stools, chairs, folding chairs, tables	ns	Kear-3916
Furniture-couches, coffee tables, etc.	ns	Linc-3558
Gym mats-for floor and wall	ns	Linc-3451
Hangers-plastic, for clothing	ns	Linc-3523
Hospital equipment-used	ns	Omah-4106
Household items (bedding, dishes, etc)	ns	Linc-3941
Household materials, clothing, furniture	ns	Linc-4061
Housewares, store fixtures, misc. durable goods	ns	Linc-3118
Lawnmower-riding or push	1/1x	Alli-3825
Machine tools-later models	ns	Hast-4129
Microfilm reader/printer	1/1x	Ord-3163
Microwave	1/1x	Linc-4100
Molding machine-plastic injection	1/1x	Hast-4125
Nebraska flag	1/1x	Linc-3634
Office furniture-desks, file cabinets, etc.	ns	Linc-4084
Office furniture-file cabinets, chairs, etc	2/1x	Beat-2753
Office furniture-chairs, file cabinets, shelves	7,3,3/1x	Spal-3650
Office equip.-Desks, shelving, filing systems, etc.	ns	Hend-2107
Office waiting chairs	2/1x	Beat-3156
Plastic injection mold bases	1/1x	Hast-4127

Material	Qty.	ID#
Playground equipment	ns	Beat-3502
Pocket folders, binders	ns	Linc-3763
Podium, easels-for display	ns	Norf-2361
Printing presses, dry cleaner equipment, etc., outdated	All	Omah-2480
Round tables	ns	Norf-2573
School materials, equipment	ns	Omah-4003
School supplies, desks, equipment	ns	Linc-4005
Science equipment-for schools	All	Pend-1225
Science lab furniture & equipment	ns	Omah-2098
Shelving	ns	Bart-3657
Shelving for books	1/1x	Plym-4067
Shelving, metal	ns	Linc-3879
Shelving units	ns	Kear-3812
Shop tools-for schools	ns	Hend-2106
Sound system-professional quality	1/1x	Linc-3644
Sports equipment-weight training, mats, hurdles	ns	Elba-3674
Stapler and pencil sharpener-heavy duty	1/1x	Linc-3348
Storage cabinet, 2 door	1/1x	Norf-2357
Tables, chairs-small size for children	ns	Linc-3356
Time clock	1/1x	Loup-3810
Time clock	1/1x	Linc-3834
Time clock	1/1x	Kear-4095
TV	1/1x	Linc-4150
TV, VCR	1/1x	GrIs-3918
TVs & VCRs	ns	Linc-4101
TV/VCR combination	1/1x	Crof-3870
VCR	1/1x	Linc-4151
Water testing equipment	ns	Linc-2442
Wheelchairs-push or electric	ns	Norf-3395
Wheelchairs, walkers, positioning chairs, etc.	ns	Coza-3105
White goods and TVs	ns	Cook-3454
White goods	ns	Hast-1832
Woodworking and other shop tools	ns	Gibb-3665
Workout equipment-treadmills, airdynes, etc.	ns	Linc-3427

Generating

Baler, small	1/1x	Omah-3885
Camera-large, commercial, horizontal	1/1x	Linc-2754
Chalkboards	3/1x	Cret-3988
Check endorser-good condition, Martin Yale 938	1/1x	Omah-3542
Conveyor solder reflow machine	1/1x	Linc-2761
Desks-elementary student	50/1x	Bart-3656
Desk-metal	1/1x	Linc-4105
Desks-wooden	3/1x	Cret-4134
Duncan system analyzer	1/1x	Linc-2768
Electrical conduit poles-2 1/2"x8'	2/1x	Omah-1617
Electric motors w/ pumps	4/1x	Omah-3104
File folders, interior	ns/1x	Linc-3960
Forms burster-good condition	1/1x	Omah-3543
Glass crusher	1/1x	Neli-3710
Granite encoder table	1/1x	Linc-2762
Growth chamber	2/1x	Cret-2847
Hog feeders-1 round metal, 1 wooden shed	1each	CeBl-3498
Lazy susan form table	1/1x	Linc-2759
Light fixtures-mercury vapor	47/1x	Cret-4135
Light fixtures-incandescent	15/1x	Cret-4136
Science counters	18/1x	Cret-3986
Screening machine-semi-automatic	1/1x	Linc-2758
Smoke detectors-24-volt system	160/1x	Linc-2756
Strobe horns (fire horns)	Lg. quantities	Linc-2765
Student desks	30/1x	Cret-3989
Student desks, chairs, tables	ns	Elba-3675
Test tube rack	1/1x	Cret-3987

Textiles & Leather

Seeking

Carpet, new or used	4 pieces/1x	Spal-2507
Carpet	ns	Kear-3742
Clothing	ns	Linc-3119
Clothing—wearable, in good condition	All	CBIA-1962
Fabric/batting for quilts	ns	Linc-4017

Material	Qty.	ID#
Fabric scrap	25,000#/mo	BRNY-3769
Polyester fiberfill	Any	Lemo-3450
Quilt batting	ns	Axe-3854
Quilt batting-100% cotton	ns	Linc-3853
Scraps-textiles for schools	ns	Colu-1036
Textile fibers	All	NHIA-4111
Vinyl or leather scrap	ns	Linc-3175
Web strapping-3/4" to 2"	ns	Milf-1547
Yarn and thread	Lg. quantities	Omah-3914

Generating

Canvas-scraps, small cotton	ns	Milf-1548
Cloths-cleaning	Lg. quantities	CBIA-1963
Clothing-surplus, plus sizes	ns	Gibb-1862
Clothing-wearable, mostly coats	Lg. quantities	CBIA-1964
Fabric, leather, foam scraps	ns	Linc-3863
Fabric-scrap	ns	Gibb-1860
Fabric-partial bolts	several	Gibb-1861
Fabric, thread, fiber, and polyurethane foam	1dmp/wk	Linc-3172
Scrap material	Lg. quantities	CBIA-1961
Scraps & trimmings—carpet	Varies	GrIs-1254
Upholstery fabric	500-1000 yds.	Arap-2084
Vinyl-scraps, 11 different colors	Lg. quantities	Suth-2114
Yarn-industrial	5,000#/mo	McCo-1282

Wood

(For wood pallets see: Containers & Pallets)

Seeking

Barn wood-for stair tread & risers	ns	Linc-1518
Lumber products—any	ns	Linc-2004
Oak wood pieces	ns	Prin-2640
Sawdust	ns	ANIA-3927
Wood scrap	Lg. quantities	Linc-3661
Wood scraps	ns	GEIL-1944
Wood scraps, pallets	ns	Linc-3829
Wood mulch	50 bags/yr	Clar-3847
Wood waste-all types, fee involved	Lg. quantities	GrIs-3704
Wood and pallet scrap	Lg. quantities	Omah-4036

Generating

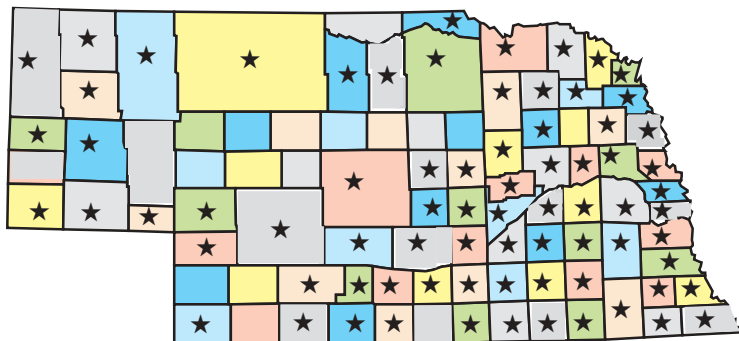
Cable spools	10/mo	Omah-2540
Oak-rough or surfaced cut offs	2 semi lds/yr	Beat-1372
Plywood scraps	ns	Hast-1637
Particle board scrap	12-20 t/wk	Aubu-1511
Sawdust	ns/bags	Norf-3940
Sawdust	5 brls/wk	Xxxx-3898
Wood chips & mulch	Lg. quantities	GrIs-3703
Wood mulch	Lg. quantities	Linc-3972
Wood scraps laminated	2 brls/day	Xxxx-3897
Wood scraps, 2x4's	200/wk	Palm-2085
Wood scrap	5 dmp/mo	Omah-1801
Wood scraps, 4x4's	25/mo	Norf-1640
Wood scraps & sawdust	ns	NoPl-1134
Wooden spools	ns	Norf-4110



The Nebraska Materials Exchange Program Wants You!

Currently 75 counties in Nebraska are involved with the Materials Exchange Program. Participating counties are denoted by stars on the map at right. Exchange representatives would like to have **ALL** counties in Nebraska actively participating in the program.

If you or someone you know hasn't joined yet, the Materials Exchange Program wants you! Call 800-486-4562 (or in Lincoln call 486-4622.)



The following counties currently have no participants in the Materials Exchange Program:

Arthur Blaine Franklin Garfield Hayes Hooker Logan McPherson Thomas
Banner Chase Garden Grant Hitchcock Keya Paha Loup Stanton Wheeler

#ID Codes

Panhandle

Alli- Alliance
 Baya- Bayard
 Chad- Chadron
 Craw- Crawford

Geri- Gering
 Harr- Harrison
 Kimb- Kimball
 Mitc- Mitchell

Morr- Morrill
 Rush- Rushville
 Scot- Scottsbluff
 Sidn- Sidney

West Central

Ains- Ainsworth
 Arap- Arapahoe
 Bart- Bartley
 Bass- Bassett
 Benk- Benkelman
 Brok- Broken Bow
 Brul- Brule
 Cozd- Cozad

Elwo- Elwood
 Gran- Grant
 John- Johnstown
 Lemo- Lemoine
 Lexi- Lexington
 LoPi- Long Pine
 Mayw- Maywood
 Maxw- Maxwell

McCo- McCook
 NoPl- North Platte
 Ogal- Ogallala
 Paxt- Paxton
 Suth- Sutherland
 Vale- Valentine

Northeast

Albi- Albion
 Alle- Allen
 Arli- Arlington
 Beem- Beemer
 Beld- Belden
 Blai- Blair
 Butt- Butte
 Clar- Clarkson
 Colu- Columbus
 DaCi- Dakota City
 Dodg- Dodge
 FtCa- Fort Calhoun
 Frem- Fremont
 Full- Fullerton

Hart- Hartington
 Kenn- Kennard
 Laur- Laurel
 Leig- Leigh
 Lind- Lindsay
 Lyon- Lyons
 Madi- Madison
 Monr- Monroe
 Neli- Neligh
 Niob- Niobrara
 Norf- Norfolk
 Nort- North Bend
 Osmo- Osmond
 O'Ne- O'Neill

Pend- Pender
 Plai- Plainview
 PCen- Platte Center
 Schu- Schuyler
 Scri- Scribner
 SoSc- So. Sioux City
 Wake- Wakefield
 Wash- Washington
 Waus- Wausa
 Wayn- Wayne
 WePo- West Point
 Winn- Winnebago
 Wyno- Wynot

Other

Xxxx- Confidential
 Codes with all capital letters refer to cities located outside Nebraska. Please contact a Materials Exchange representative for more information.

Southeast

Adam- Adams
 Aubu- Auburn
 Beat- Beatrice
 Belv- Bellevue
 Benn- Bennet
 BlSp- Blue Springs
 Brow- Brownville
 CeBl- Cedar Bluffs
 Cere- Ceresco
 Cook- Cook
 Cret- Crete
 Davi- David City
 Dent- Denton
 Dill- Diller
 Doug- Douglas
 Eagl- Eagle
 Elmw- Elmwood
 Elkh- Elkhorn
 Exet- Exeter

Fair- Fairbury
 Fall- Falls City
 Fill- Filley
 Frie- Friend
 Gene- Geneva
 Gret- Gretna
 Hebr- Hebron
 Itha- Ithaca
 LaPl- LaPlatte
 LaVi- LaVista
 Linc- Lincoln
 Malc- Malcolm
 Mead- Mead
 Milf- Milford
 Murd- Murdock
 NeCi- Nebraska City
 Osce- Osceola
 Omah- Omaha
 Pana- Panama
 Papi- Papillion

PaCi- Pawnee City
 Plat- Plattsmouth
 PIDa- Pleasant Dale
 Plym- Plymouth
 Prin- Princeton
 Raym- Raymond
 Roca- Roca
 Sewa- Seward
 Ster- Sterling
 Syra- Syracuse
 Tecu- Tecumseh
 Utic- Utica
 Vall- Valley
 Valp- Valparaiso
 Wave- Waverly
 Waho- Wahoo
 Wate- Waterloo
 Weep- Weeping Water
 West- Weston
 York- York

Central

Alda- Alda
 Alma- Alma
 Arca- Arcadia
 Auro- Aurora
 Axtel- Axtell
 Boel- Boelus
 Blue- Blue Hill
 Cent- Central City
 Chap- Chapman
 Dave- Davenport
 Desh- Deshler
 Doni- Doniphan

Elba- Elba
 Gibb- Gibbon
 Grls- Grand Island
 Harv- Harvard
 Hast- Hastings
 Hend- Henderson
 Hold- Holdrege
 Kear- Kearney
 Loup- Loup City
 Marq- Marquette
 Mind- Minden
 Ord- Ord

Orle- Orleans
 Palm- Palmer
 Polk- Polk
 RedC- Red Cloud
 Rose- Roseland
 StPa- St. Paul
 Sarg- Sargent
 Shel- Shelton
 Spal- Spalding
 Supe- Superior
 Sutt- Sutton
 Wilc- Wilcox

SPECIAL THANKS TO THE LATEST PARTICIPANTS IN THE MATERIALS EXCHANGE PROGRAM

Area Economic Dev. Council
 Avaya, Inc.
 Boys and Girls Clubs of Omaha
 Capitol City Telephone
 Ceresco Public Library
 City of La Vista Public Library
 D & D Laser
 Davison's Gallery

Eyemasters
 Geneva State Bank
 Intellitek, Inc.
 Kaspar Tree Farms, Inc.
 Knapp Electric
 Liberty Commodities
 M-n-J Enterprises
 Mail Express-Kearney

Mulhall's
 Omaha Community Foundation
 Orphan Grain Train
 Primary Eye Care
 Ram Bldg. Materials Closeout Ctr.
 Salvation Army-Lincoln
 United Methodist Ministries

DON'T LET THIS MATERIAL GO TO THE LANDFILL!!

It is often difficult to adequately describe some of the available material through the brief description allowed in the listings section. As a result, some very good, usable material continues to be discarded because many **Link** readers simply can't get a good idea of what the material is.

Here are more detailed descriptions of a few listings. This material is currently either being landfilled or stockpiled. If you would like additional information for any of the items described, please contact the Exchange at 402-486-4622.

Tarps? Signs?

We have a new listing for some very versatile material that could have any number of uses. It's a heavy-duty, vinyl material in large sheets. The sheets are approximately 14 ft x 48 ft or 10 ft x 36 ft. The material is waterproof and could be cut to smaller sizes.



Cover your vehicle!!

Just a few suggestions for possible uses would include signage (indoor and outdoor), construction projects, or covering kennels, compost piles and vehicles.



Keep Fido dry!!

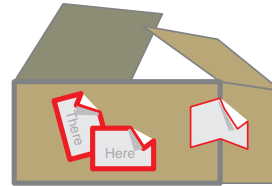
The material is located at a company in Omaha and is generated as scrap on an ongoing basis. So far we have a few organizations that have expressed an interest in the material, but there is still much more available!

Boxes and Packing Material

Cardboard boxes and shipping tubes are available in a variety of shapes and sizes. We also have businesses that generate packing peanuts, rigid styrofoam, bubble wrap, and soft foam.

This material would be particularly useful for anyone who sells items on eBay, mailing outlets, or other businesses that have to pack and ship fragile items.

If you know of anyone who might be searching for packing materials, please spread the word!! You can call the Exchange for more details about availability and location!

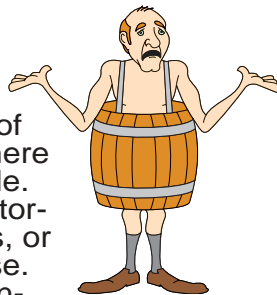


We've Got Drums!

We have numerous listings from businesses all over the state who are generating plastic, fiber, or steel drums. Most of the barrels are 55 gallon, but there are a few smaller sizes available.

The drums can be used for storage, shipping, as recycling bins, or as trash cans in your warehouse. The Exchange was recently contacted by an organization that wanted a number of barrels to build barriers for a paint ball game!

So give it some thought....you might discover an innovative use for some of these drums.



Shelving Material, Construction Projects, Shop Classes...

These are just a few of the possible uses for this material available in Lincoln. This is pressed fiberboard that is left from a sign making process. Each board is approximately 20" x 48" x 1/2" thick. The boards are brown veneer on one side and white on the other side.

This material has been listed with the Exchange for over a year. So far, we haven't been able to locate anyone who is interested in finding a reuse for this versatile material. So if you have any small construction projects, know of a high school shop class in need of material, or if your office or organization needs additional shelving, please give us a call at the Exchange.



**By the time a baby born in the United States reaches age 75, he or she will have...
produced 52 tons of garbage,
consumed 43 million gallons of water
and used 3,375 barrels of oil.**

Nebraska Materials Exchange Program Application

The purpose of this form is to identify any wastes or surplus materials from one business, industry or school that could be utilized by another. The more information you provide, the more likely an exchange will occur. Please type or print. Questions? Call Keep Nebraska Beautiful at 1-800-486-4562. (In Lincoln call 486-4622)

Company/Organization

Contact	Date	
Mailing Address		
City	State	ZIP+4
Phone ()	Fax ()	
Email Address		

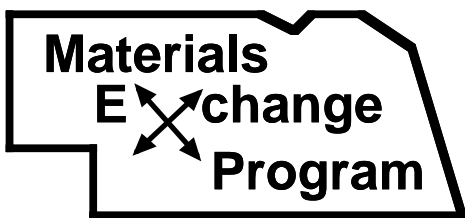
Note: Please complete all applicable items. If you have more than one item, please copy this form for each material, or attach a list of materials and the quantity of each one.

1. Is your company/organization a 501(c) 3 nonprofit organization? ___ Yes ___ No
2. Does your company have a newsletter? If yes, who is the contact? _____
3. To what trade associations do you belong? What trade magazines do you read? _____

4. May we release your name/address/phone to interested parties? ___ Yes ___ No
5. Are you SEEKING or GENERATING this material? ___ Seeking ___ Generating
6. Please Specify Material Here: *Generic name or primary usable constituent (If plastic, list mfg. & commercial name/grade #):

7. List quantity (in units: pounds, etc.): _____ **Per:** Day Week Month Quarter Year 1X only
8. Physical state: (if applicable) Liquid Slurry Solid Semi-solid Sludge Dust Cake Gas Other _____
9. Packaging: (circle one) Bulk Drums Dumpsters Gaylords Pallets Bales Other _____
10. General information as known: chemical composition, type of plastic, main ingredients, cost, pH, toxicity, reactivity, color, particle size, flash point, total solids, purchase date, industrial process generating this material, contaminants, etc.

11. Available to interested parties: (if applicable) ___ Sample ___ Lab Analysis ___ Independent Analysis
12. Please list any items your company would be willing to donate to schools.



Thank you for your interest in the Nebraska Materials Exchange Program. We will keep in contact with you regarding your application, as well as send our quarterly materials exchange newsletter, *The Link*.

Please mail or fax this form to:
 Keep Nebraska Beautiful,
 3201 Pioneers Blvd., Suite 306, Lincoln, NE 68502-5963
 Fax: (402) 486-4563
 Applications can also be submitted via the website at www.knb.org



Do Your Part To Help Keep Nebraska Beautiful! Become A Member Today!

Name _____

Co./Org. _____

Mailing Address _____

City/State/Zip _____

Phone: () _____ Fax: _____

_____ Sustaining Member \$1000+

_____ Sponsoring Member \$500-999/yr.

_____ Supporting Member \$100-499/yr.

_____ Chamber of Commerce \$50/yr.

_____ Community-Pop. over 5,000 \$100/yr.

_____ Community-Pop. under 5,000 \$50/yr.

_____ Sr. Citizen/Student \$10/yr.

_____ Non-profit/Civic Org./School \$30/yr.

_____ Family \$20/yr. or \$45/3 yrs.

_____ Individual \$15/yr. or \$30/3 yrs.

Your paid membership entitles you to several benefits. Please indicate the benefits you would like to receive below. Items not checked will not be sent and that part of your contribution will be used on educational programs.

- A KNB canvas shopping bag
- Quarterly mailings of the KNB newsletter *Waste Paper*
- Quarterly mailings of *The Link*
 - Via electronic email—address _____
- Information on workshops & conferences

Total amount enclosed \$ _____

Send your check and membership form to:

***Keep Nebraska Beautiful
3201 Pioneers Blvd., Suite 306
Lincoln, NE 68502-5963***

For Sustaining, Sponsoring & Supporting Members Only:

- Corporate member wall plaque (or brass disc for renewals)
- A free copy of Keep America Beautiful's *Waste in the Workplace*

Make Checks Payable to: Keep Nebraska Beautiful

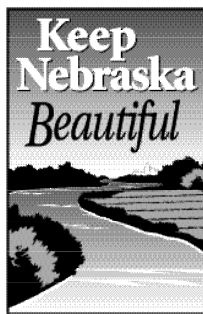
The Link is published quarterly by Keep Nebraska Beautiful, 3201 Pioneers Blvd., Suite 306, Lincoln, NE 68502.

Telephone: (402) 486-4562

Fax: (402) 486-4563

Web Site: <http://www.knb.org>

Funding for this program is provided by the Nebraska Waste Reduction and Recycling Incentive Fund, administered by the Nebraska Department of Environmental Quality, and through memberships and contributions of many of our participants.



Governor's Council to
Keep Nebraska Beautiful
3201 Pioneers Blvd., Suite 306
Lincoln, NE 68502-5963