

The Link

Materials Exchange Program

A Quarterly Materials Exchange Newsletter SPRING 2004

Board of Directors

GEORGE ACKER
Ogallala
CINDY ADKINS
Cozad
JOE BAXTER
South Sioux City
ROGER BEHRNS
Louisville
MATT BOERKIRCHER
Kearney
CHERYL GERKINS
Lincoln
JIM GOEKE
North Platte
DENNIS GRAMS
Lincoln
PATTY GREENE
Plattsmouth
JOHN KINTER
Columbus
BETH ANN KERNES KRAUSE
Julian
TOMAS MILLER
Norfolk
MICHAEL MOSTEK
Omaha
PAUL O' HARA
Lincoln
DAVE OSTDIEK
Gering
JIM OTTO
Lincoln
PATRICIA OWEN
Lincoln
MIKE SCHRAD
Omaha
DICK VARNER
Omaha
CINDY WAGNER
Ashland
KEVIN WARNEKE
Omaha

EX-OFFICIO MEMBERS
MIKE JOHANN
Governor, State of Nebraska
MIKE LINDER
Director, Dept. of
Environmental Quality
DAVID STERN, EMERITUS
Omaha

JANE POLSON
Executive Director

LINCOLN ACTION PROGRAM RECEIVES DONATED COMPUTERS

In the fall of 2003, the Materials Exchange Program was contacted by Lincoln Benefit Life, an insurance company in Lincoln. They had over 125 computer systems that were working, but obsolete for their business applications. The company wanted assistance in locating a nonprofit organization that could use the computers as a donation.

Lincoln Action Program (LAP), a Materials Exchange participant since 1999, was contacted about the computers. Ironically, the computers were stored in a warehouse only a block away from LAP! The Computer Distribution Manager from LAP determined the computers were in working order and could be utilized for their distribution program.

Over the next several weeks, the computers were removed from Lincoln Benefit Life's warehouse and distributed to individuals and families who had completed a curriculum of computer classes at LAP.

The recipients of the computers come from a variety of backgrounds, including the recently unemployed who need to improve their job skills, and immigrants and refugees from countries such as Vietnam, Sudan, Iraq, Mexico and Russia. In 2002-2003, LAP gave away 316 computer systems to program participants.

Thanks to Lincoln Benefit Life for their generous donation to Lincoln Action Program and for choosing to contact the Exchange rather than sending the computers to the landfill.



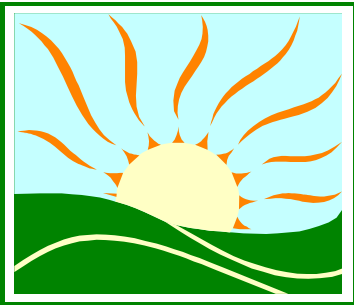
The Computer Learning Lab at Lincoln Action Program provides classes that teach computer skills such as Windows, Internet, and spreadsheets. Classes are offered in several languages including Russian, Arabic, and sign language.



Students from the Vietnamese class at the Computer Learning Lab receive certificates after completing 30 hours of curriculum. Many of the computers used in the lab and distributed to program participants have been donated.

Become a Keep Nebraska Beautiful member today! See membership form on page 12.

EXPANDING OUR HORIZONS



In the fall of 2003, the Materials Exchange Program began an information campaign specifically designed to educate nonprofit organizations and schools about the benefits of participating in the Exchange.

Hundreds of letters and brochures were sent to humane societies, schools, churches and museums. The goal -- to increase awareness about the program and provide information about participation.

To date, our efforts have met with great success. Participation in the Exchange continues to increase as we educate and assist these organizations in finding items they might not be able to purchase with their limited budgets.

Those organizations who do not wish to participate in the Exchange by posting specific listings, are encouraged to sign up to receive **The Link**, and to add their organizations to a nonprofit "call list." This contact list is utilized whenever useful items often needed by most nonprofit organizations become available. The goal is to share the information as quickly as possible with the largest number of organizations. Our nonprofit call list has grown to include over 230 organizations.

Our ability to assist nonprofit organizations and schools in finding useful materials depends primarily on Nebraska businesses who participate in the Materials Exchange. Businesses who call the Exchange before landfilling useful items are able to save disposal fees AND help their communities by donating much-needed materials.

Thanks to the generosity of several Nebraska businesses, the Exchange has recently been able to match hundreds of needed items with nonprofit organizations and schools across the state.

To find out more about how your school or nonprofit organization can participate in the Exchange, or if you have any materials that might be useful to these organizations, please contact the Exchange for more information.

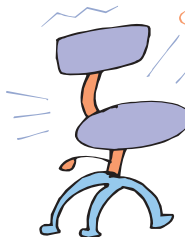
Questions? Contact us.
EMAIL: info@knb.org
PHONE: 402-486-4622
WEBSITE: www.knb.org

RECENT SUCCESS STORIES

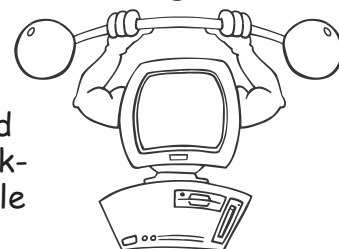
- ◆ A local Lincoln company specializing in document destruction had dozens of empty binders they couldn't use. A zoo, a school, and a substance abuse treatment center were able to utilize the binders for their programs.
- ◆ When a large company began a file conversion project, they were left with a thousand letter-size folders they no longer needed. Not only were they generous enough to donate the folders to a school in western Nebraska, they even arranged to ship the folders!



- ◆ A large paper shredder which would have cost hundreds of dollars to purchase new, was donated to a Lincoln school.
- ◆ Several large businesses in Lincoln and Omaha opened their storage warehouses to nonprofit organizations across the state. As a result, thousands of pounds of material were diverted from Nebraska landfills, and these organizations received needed items like office cubicles, desks, folding tables, file cabinets, chairs, bulletin boards, and bookcases.



- ◆ Over 30 computer systems no longer needed by a Columbus business found new life with a statewide organization dedicated to providing free, working computers to people with disabilities.



April 1 - May 15

Join us for the nation's largest annual cleanup and community beautification effort. For more information about how you can help, visit our website at www.knb.org.

ANOTHER OPTION: SOURCE REDUCTION

In the past 50 years, waste and waste management have become a particular concern for Americans. There are several reasons why waste disposal has jumped to the forefront of environmental issues. The amount and type of garbage our society is producing and the availability of natural resources have changed dramatically since the middle of the 20th century.

Population growth is certainly a contributing factor to our growing garbage problem. But not only has the population in this country increased by almost 100 million people since 1950, the amount of garbage produced per capita has more than doubled to over 4 pounds per day.

As our society has become more "disposable," products are no longer being built to last for substantial lengths of time and are often unable to be repaired. In addition, the type of waste generated is becoming increasingly toxic, especially with the voluminous amounts of e-waste which are being discarded.

With the depletion of our natural resources, the economic costs, and environmental problems associated with managing our solid waste, it is in our best interests to reduce the amount of garbage that we produce. Recycling and composting have become important components in reducing solid waste. But **source reduction** is the most practical and efficient method of reducing our garbage.

Source reduction is essentially stopping waste before it is produced by consuming less and throwing less away. Rather than recycling, composting, or landfilling solid waste, source reduction prevents waste from being generated in the first place.

Whether implemented at home, in the office, or in a manufacturing plant, source reduction has a number of economic and environmental benefits:

Saves natural resources - Every product has a life cycle. Raw materials for a product are extracted, processed, manufactured, and the product is transported. Eventually, the product is either recycled or disposed of. The "steps" in the life cycle of a product require using natural resources and produce waste. Reusing items, reducing the materials used in products, or eliminating use of the product means natural resources are saved and the amount of material recycled or sent to the landfill is reduced.

Reduces toxicity of waste - Soil, water, and air contamination can result when toxic waste is disposed of in the landfill or disposed of improperly. There are a number of ways to reduce

or eliminate the use of hazardous products. For example, find environmentally-friendly alternatives or share products instead of dumping out any leftovers.

Reduces costs - Disposing of garbage is costly. Recycling and composting programs are effective forms of waste reduction, but they can also be costly programs for communities to maintain. Source reduction impacts disposal fees, waste transportation costs, and landfill site and operation costs.

Source Reduction refers to any change in the design, manufacture, purchase, or use of materials or products (including packaging) to reduce their amount or toxicity before they become municipal solid waste. Source reduction also refers to the **reuse** of products or materials. (EPA definition)

SOURCE REDUCTION TIPS

- ◆ Reusing items avoids or, at the very least, delays the material entering into the waste stream. We've probably all practiced reuse at some time by donating usable items to Goodwill, shopping at a second-hand furniture store, or participating in the Materials Exchange Program.
- ◆ Buy durable, long-lasting products that can be repaired or used over again. This includes using cloth rags instead of disposable paper towels, or upgrading your computer instead of purchasing an entire new unit.
- ◆ Purchase materials in bulk. This reduces the amount of raw materials needed for processing the packaging.

Current Listings



To inquire about any items, write Keep Nebraska Beautiful: 3201 Pioneers Blvd., Suite 306, Lincoln, NE 68502-5963; call 1-800-486-4562 (in Lincoln 486-4622); fax (402) 486-4563; or visit our website at: <http://www.knb.org>

Material Qty. ID#

Highlighted Items

New Items Since Winter 2003 Issue

Seeking

Aluminum cans	ns	Axte-4653
Antifreeze	10,000#/mo	CSCO-4638
Bags-seed corn or pet food	ns	Mead-4588
Blackboards	ns	Macy-4598
Blankets	ns	Norf-4632
Bookshelves	ns	Walt-4535
Cabinets w/ drawers	ns	SoSc-4585
Chairs/office furniture	ns	Macy-4596
Child development materials	ns	Linc-4620
Children's clothing	ns	Linc-4623
Children's furniture	ns	Linc-4629
Children's furniture	ns	Linc-4621
Cleaning supplies	ns	Linc-4637
Computers-Pentium, Win95	ns	Omah-4657
Computer tables/carts	ns	Hend-4592
Computers-working	ns	Linc-4624
Computers-working	ns	Linc-4635
Computer-Windows 98 or better	1/1x	Linc-4567
Desks	ns	Walt-4534
Educational materials	ns	Linc-4658
Fabric-cotton	Lg. quantities	COGA-4576
Fencing-any type	ns	Linc-4619
File cabinets	1/1x	Linc-4627
File cabinets	ns	Linc-4634
Filter material	ns	Hast-4654
Floor tiles-vinyl	ns	Mind-4581
Folding chairs	ns	Harr-4533
Food-non-perishable	ns	Norf-4631
Laptop w/ CD Rom	1/1x	Itha-4665
Office chairs	ns	Walt-4536
Office chairs	ns	Omah-4649
Office furniture	ns	Linc-4622
Oil-used	any quantity	Mina-4593
Packing materials	Lg. quantities	OSIA-4641
Pallets-wooden, 40x48, odd sizes	4,000/mo	Gret-4532
Paper folding machine	1/1x	Linc-4639
Paper-used for scratch paper	ns	Geri-4584
Patio furniture-redwood	ns	Linc-4630
Phone system	ns	Linc-4636
Photographers backdrop	1/1x	Itha-4664
Plastics	Lg. quantities	EXCA-4580
Printers-working	ns	Linco-4625
Science equipment	ns	Linc-4628
Shelving units	ns	Linc-4557
Slip sheets-plastic	1000/yr	Brid-4583
Storage cabinets w/ doors	2/1x	Linc-4537
TVs	6/1x	Macy-4597
Tables/office furniture	ns	Macy-4595
Typewriters-electric	3/1x	Omah-4612
Wrap material	ns	Mead-4589

Generating

Bags-plastic lined	dmpstr/3 wks	Geri-4590
Baler-for cardboard	1/1x	Belv-4538

Material	Qty.	ID#
Cabinet-small, on wheels	1/1x	Linc-4546
Cardboard	2 plt/wk	Alli-4609
Desk-small, metal	1/1x	Linc-4544
Desk-wooden, large	1/1x	Linc-4545
Drums-steel, 55 gal	100+/1x	York-4577
Dry wall scrap-ground up	Lg. quantities	Linc-4670
Electronic equipment	ns	Omah-4611
Executive chairs	2/1x	Linc-4541
Fan coil, heat coil unit	1/1x	Geri-4573
Filter presses	3/1x	DeWi-4669
Float glass	Dmpstr/mo	OSIA-4642
Forklifts-reconditioned	ns	Monr-4586
Hangers-plastic	Sm. quantities	Scot-4659
Laser printers	2/1x	Omah-4650
Matting scraps	ns	OSIA-4643
Medicine chest	5/1x	Geri-4574
Microwave	1/1x	Linc-4543
Monitors-20"	11/1x	Linc-4582
Network hub	1/1x	Omah-4651
Office chairs w/ arms	4/1x	Linc-4539
Office cubicles	ns	Omah-4564
Organ-electric	1/1x	Omah-4663
Overhead projector	1/1x	Linc-4542



Available Linc-4640
Lucent Partner phone system.
Includes over 30 phones,
carrier equipment,
modules, and instruction
manuals.

Pallets	10-20/mo	Alli-4610
Pallets	ns	Geri-4571
Pallets	ns	Alli-4591
Pallets-wooden	ns	Colu-4579
Pallets-wooden	3-6/wk	Colu-4660
Pallets-wooden	varies	York-4578
Paper	Sm. quantities	Scot-4662
Plastic	Sm. quantities	Scott-4661
Phone system	1/1x	Linc-4640
Secretarial chairs w/o arms	6/1x	Linc-4540
Towel bars	20/1x	Geri-4575

Ag Products

Seeking

Cattle hides	All	Belv-1051
Fallen farm & feedlot animals	All	Belv-1052
Locker & grocery meat scraps	All	Belv-1053
Organic products	Lg. quantities	Xxxx-3932
Organic waste	All	MIMN-4197
Packing house by-products	All	Belv-1054
Straw bales—square wheat, oat, or rye	ns	Linc-1519

t=ton
g=gram
L=liter

yd=yard
qtr=quarter
gd=gaylord

ml=milliliter
wk=week
plts=pallets

semi=semi-truck
cu. yd.=cubic yard
dmptr=dumpster

cont=container
1X=one-time amount
ns=amount not specified

Material	Qty.	ID#
Generating		
Cornstarch	100 t/mo	Xxxx-3576
Dry fat products	ns	Xxxx-4443
Egg shells	15 t/day	Omah-4300
Syrup products	50 t/mo	Xxxx-3577
Wet dairy products	ns	Xxxx-4445
Wet yeast products	ns	Xxxx-4444

Chemicals

Seeking		
Chemical waste	ns	Omah-3513
Chemicals-bulk organic or inorganic	ns	NERI-3140
Chemicals for resale	ns	HPNJ-2391
Ferric chloride, spent	ns	DPMO-4051
Hazardous chemicals, acids, alkalis	Lg. quantities	SLMO-2820
Hazardous materials	ns	Linc-3051
Polyols & isocyanates	Lg. quantities	ORCA-3977
Solvents, detergents, dyes, pigments	ns	WANJ-3596

Generating		
Antifreeze-used	2 drms/mo	Colu-4096
NaOH solution	5,000 gal/wk	YASD-3562
Polyols & isocyanates	Lg. quantities	ORCA-3978

Construction Materials

Seeking		
Asphalt shingle scrap	Lg. quantities	Wave-3950
Building materials	All	Linc-4189
Bricks for paving	ns	Malc-4436
Construction materials	ns	Stap-4486
Construction materials-insulation, windows, siding	ns	Linc-3139
Construction materials-anything usable	ns	Omah-3319
Construction material-doors, windows, appliances	1x	Roca-3859
Doors, windows, cabinets	ns	Linc-1517
Glass block	ns	Linc-4481
Hardwood gym flooring-used	All	Wyno-1264
Lumber and other shop supplies	ns	Gibb-3664
Posts (cedar logs, metal irrigation pipe, oil pipe)	ns	Linc-2518
Rubble-dirt, asphalt, concrete	ns	Linc-3120
Shop class materials	ns	Elba-3671
Usable construction supplies & materials	ns	Beat-2643

Generating		
Cabinet material scrap w/ formica	1 dmpr/mo	GrIs-1253
Concrete bunker silo wall supports	25/1x	Chap-3872
Concrete, rubble	160 cu yds/1x	Chap-3871
Construction material-varies	ns	Linc-3259
Drywall scrap	10 plts/mo	GrIs-1249
Hardboard siding scrap	3-4 dmpr/mo	GrIs-1250
Laminated sink cutouts, approx. 22" x 33"	Varies	Omah-1632
MBO board-20"x48"x1/2"	1000/1X	Linc-3501
OSB (wafer board) scrap	3-4 dmpr/mo	GrIs-1251
Particle board scrap	2-3 dmpr/mo	GrIs-1252
Trusses & rafters w/ plates—broken	1 dmpr/mo	GrIs-1258

Containers & Pallets

Seeking		
Bags-lined & unlined, paper	ns	Geil-3938
Boxes-cardboard, various sizes	ns	Beat-2065
Boxes-cardboard, 16"x16"x30"	300/yr	Milf-1545
Boxes-cardboard, 16"x16"x12"	Lg. quantities	Suth-2116
Boxes-corrugated	ns	Frem-4232
Boxes-corrugated	Truckloads	Omah-4231
Buckets-5 gal, food grade	20/yr	Raym-3767
Buckets-5 gallon plastic w/ lids	ns	Schu-4505

Material	Qty.	ID#
Buckets-5 gal, plastic, prefers food grade	ns	Linc-3206
Buckets-5 gal, plastic, w/ handles	ns	PIDa-4063
Crates-Wood	12/mo	Linc-2788
Drums-fiber, 7.5 gal w/ lid	ns	Norf-4092
Drums or buckets—plastic, 5 to 55 gal	All	Kear-1102
Drums-plastic, 30 gal	10-20/1x	Linc-3468
Drums-plastic, 20 & 35 gal	ns	Norf-2732
Drums-plastic, 55 gal	ns	Linc-1423
Drums-steel, 55 gal	ns	Rose-3958
Drums-plastic or steel, any size	ns	Hast-2165
Drums-55 gal., plastic, reg & open top	All	Vall-1003
Drums & totes-steel & plastic, 35 & 55 gal	All	FtCa-1276
Drums-steel & plastic	All	Omah-1173
Drums-55 gal	ns	Full-4240
Gaylords	ns	Wilc-3747
Gaylords	ns	DRFL-3563
Gaylords	ns	Norf-3463
Gaylords	100/mo	Linc-3404
Polytotes-225 to 345 gal	ns	Omah-3726
Storage containers, food grade, w/ lids	ns	Norf-4180
Totes	ns	PEND-4292

Pallets—Wood—Seeking

All	BISp-1391	48x48, 200/mo	Linc-2789
All	SHIA-3824	42x48, 200/mo	GrIs-2816
Lg. quantities	BRIA-1945	48x40, All	Omah-1381
All, only 40x48	Frem-1057	Various, min. 32x30	Omah-2060
All, only 40x48	GrIs-1394	Various sizes, lg quantities	Cook-4157
36x40-lg. quant.	Hast-1626	48x48, ns	Omah-3093
4 way, 48x40, ns	Linc-2975	40x42, lg. quantities	Omah-3196
Trailerloads	Linc-2260		

Generating

Boxes-20"x 40"x 20"	40-50/yr	Milf-1546
Boxes-18"x 18"x 18"	30-40/mo	Omah-1753
Boxes, various sizes	ns	Omah-1886
Buckets-metal, 2.5 gal, with handle	10/wk	Linc-3308
Buckets-#2 plastic, black	50-100/mo	Omah-1795
Buckets-5 gal	24/wk	Omah-2011
Drums-fiber	200-300/yr	Omah-1751
Drums-steel, 35 gal	ns	Linc-1642
Drums-55 gal, steel	2/wk	Omah-4476
Drums-55 gal, plastic	4/wk	Omah-4475
Drums-plastic, 55 gal	ns	Norf-3487
Drums-plastic, 55 gal	10/wk	Omah-2010
Drums-plastic, 55 gal	20-25/mo	WIND-3398
Drums-steel, 55 gal	15/mo	Linc-4244
Gaylords	ns	DRFL-3900
Gaylords	40/wk	Omah-1976
Pallets, pressed board	200/mo	Omah-4326
Poly totes-225-345 gal	ns	Omah-3726
Wooden spools, pallets	50/mo	Colu-3792

Pallets—Wood—Generating

20/mo	Aubu-3610	400/mo	McCo-1284
Odd sizes, 100/mo	Cozd-1363	Various sizes, ns	Omah-4325
Various sizes, 30-50/mo	Frem-1431	Various sizes, 50/mo	Colu-3792
40x48, 4 way, 25/mo	Gene-2892	Various sizes, 2 lg dmpr/mo	Norf-1639
40x48, 100/1x	McCo-4344	Various, 50-100/mo	Linc-4243
40x48-4 way, 30/wk	Arap-4372	Various, 300-400/1x	Ogal-4248
48x48, 30/yr	GrIs-1754	Various, 12-15/mo	Ogal-4263
8 ft x 4 ft, 300/mo	Linc-3133	Various, waste, 1-20t/wk	Hast-4161
40x48, ns	Hast-3160	Various sizes, 80 cu yds/wk	Colu-1998
40x48, 6-10/day	Xxxx-4113	Irreparable, 2 dmpr/mo	Omah-1584
10-20/wk	Linc-1171	48x36, Lg. quantities	Omah-2226
36x48 & 36x36, ns	Linc-3260		

**Please visit our website at knb.org
or email us at info@knb.org**

Durables & Electronics

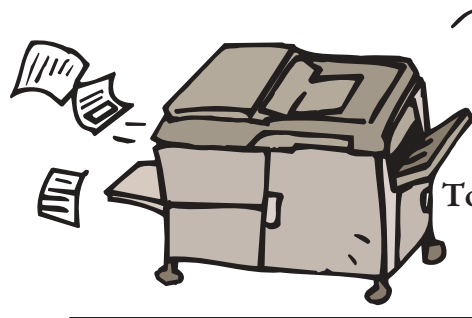
<u>Seeking</u>		
Cell phones-working & non-working	All	Crete-4012
Central office switches	All	DUON-3530
Circuit boards	All	Kear-1101
Circuit boards-electronics	ns	Linc-4089
Computer monitors-17"	ns	Omaha-4462
Copier-desktop	1/1x	Linc-3588
Electronics, integrated circuits, computer parts	All	FPIL-1224
Electronics & computer equip, for recycling	Lg. quantities	CHIL-3974
Electronic scrap for recycling	All	Omaha-3459
Electronic scrap for recycling	Lg. quantities	Omaha-4207
Electronic equip-working & non-working	ns	Linc-3376
Fax machine	ns	Omaha-4408
Printers-laser	ns	Linc-4453
Printers-ink jet or dot matrix	ns	Omaha-2671
Radio-base station & radios	1x	Beat-3602
Scanner	1/1x	O'Ne-4271
Telephone & computer mainframe equip.-Scrap	All	Kear-1246

<u>Computers-Seeking</u>			
486 or better, 2/1x	FtCa-3489	Pentium, ns	Stap-4485
486 or better, 1/1x	WePo-4360	Pentium w/ CD-Rom, 10/1x	Linc-3478
486 or better, laptop,lea/1x	Linc-3979	Pentium, working	Omaha-2622
Computers, Lg. quantities	SPMN-3911	Pentium, working, Any	Linc-2728
Computer w/ printer	Omaha-4143	Pentium, 6/1x	Linc-3425
Computer w/ Win98	Beat-3658	Pentium or better, 1/1x	StPa-4371
Computer w/ Win95, 1/1x	Plai-4190	Pentium w/ CD-Rom	Omaha-3589
Computers, Win95 or better	West-2585	Pentium	Omaha-2688
Computer, Win95 or better	Linc-4154	Pentium-complete	Omaha-3651
Computers w/CD-Rom	Fair-3409	Pentium, 40/yr	O'Ne-3695
Computers w/CD-Rom	Coza-3734	Pentium w/Win95, better	Xxxx-3089
Computer, working, 1/1x	Lind-4179	Pentium 3 or better, ns	Hend-2104
Computer equip, ongoing	Papi-3861	Working, Lg. quantities	Omaha-4409
Computer, media equip., ns	Beat-2331	Working & non-working	Linc-3886
IBM comp., Pent, 20/qtr	Omaha-3860	Working & non-working	Linc-3890
Laptop, 1/1x	Harr-4199	Working & non-working	Omaha-3913
Laptop, IBM, 1/1x	Hart-4327	Working & non-working	Omaha-2915
Laptop, ns	Yuta-4470	Working & non-working	Omaha-3459
Laptop, 1/1x	Xxxx-4112	Working & non-working	STPA-4021
Parts, Any	Kear-1412	Working & non-working	Linc-4028
Parts, Any	Wave-4107		
Pentium w/ CD-Rom,1/1x	Elwo-4181		

<u>Generating</u>		
Computers, 4 laptops, 3 Macs to sell	1x	Ains-3842

Metal

<u>Seeking</u>		
Aluminum scrap for welding	ns	Linc-4415
Aluminum, steel, cans, cars	Lg. quantities	Omaha-4144
Aluminum, tin	Lg. quantities	Hast-3917
Aluminum, tin	Lg. quantities	Omaha-3906
Aluminum, tin	Lg. quantities	Beat-3921
Aluminum	Lg. quantities	NHIA-3924
Automobiles for scrap	ns	Linc-1953
Brass, copper, aluminum, lead	ns	Norf-1952
Copper-bearing items	ns	DUON-3882
Ferrous & nonferrous	All	Kear-1978
Ferrous & nonferrous	All	Linc-1955
Ferrous & nonferrous	All	Omaha-2481



Available
Linc-4501
Toner for Minolta
copier
3 bxs/1x

Ferrous & nonferrous	All	Omaha-1425
Ferrous & nonferrous, copper, brass	ns	Linc-3874
Grindings, powders containing metal	25 t/wk	HIMO-3954
Metal scrap-copper, zinc, nickel, aluminum, etc.	ns	DUON-3529
Metal scrap, copper, #1, #2, #3, insulated wire	ns	DUON-3881
Metal scrap-tin cans	Any	Omaha-3931
Metal, scrap for recycling	Lg. quantities	CHIL-3827
Metal, scrap for recycling	ns	Linc-4159
Nonferrous	All	Kear-1099
Scrap metal	All	Hast-2602
Scrap steel, metal plate	ns	Hast-4000
Solder dross	All	Kear-1273
Stainless steel & nickel alloy	ns	DUON-3883
Tin, ferrous and nonferrous	ns	Cook-3453
Tin, aluminum	ns	Frem-4174
Wire	Lg. quantities	Omaha-4206
Wire-insulated copper & aluminum	All	Kear-1268
Zinc dust	Lg. quantities	QUIL-4465

<u>Generating</u>		
Aluminum dust	7000-8000#/yr	Davi-3585
Grinding wheels	20,000#/mo	Xxxx-4114
Scrap from fireplace installation	ns	Linc-3801
Zamac and lead ingots, copper & alum. choppings	ns	DUON-3533
Zinc dust	80,000#/mo	QUIL-4257

Oils & Waxes

<u>Seeking</u>		
Grease-used, kitchen	All	Belv-1055
Oil-animal or vegetable	All	Belv-1056
Oil-used hydraulic, auto	Lg. quantities	SCIA-1087
Oil-used	ns	Alia-3832
Oil-used for burning in stove	ns	Omaha-4335
Oil-used, non-synthetic	4,000 gal/yr	Omaha-1946
Oil-used	Lg. quantities	Hast-3736
Wax-food grade	ns	Axe-4001

Other

<u>Seeking</u>		
Absorbent material for corn waste	Lg. quantities	Blai-4342
Art supplies	ns	Stra-4422
Art supplies	All	Omaha-1460
Art supplies	ns	Linc-3668
Architectural antiques	ns	Linc-3503
Batteries-all	All	Linc-1954
Batteries	ns	Hast-3518
Batteries-from autos, sealed lead/acid	All	Linc-2491
Batteries	Lg. quantities	SPMN-3912

Materials Exchange Disclaimer: Information provided through this database is supplied by the lister of the material. Keep Nebraska Beautiful is not responsible for any warranty, expressed or implied, as to the accuracy of the material description, the suitability of a particular use, or the saleability of any material offered through this service. It is the legal responsibility of each party to determine whether a listed material is a hazardous waste or a hazardous material. Both hazardous and solid wastes must be managed in accordance with all relevant regulations and laws. Keep Nebraska Beautiful reserves the right not to list a material, to delist a material, or to edit information provided by the listing party.

Material	Qty.	ID#
Binoculars	36/1x	Elwo-1410
Bird guides	36/1x	Elwo-1404
Canvas, art brushes, ink	ns	Omah-3902
Catalytic converters	ns	Kear-1209
Child development center materials	ns	Linc-3426
Construction cones-orange	12-24/1x	NoPl-4378
Craft items-paper, wood	ns	Linc-4048
Drums, any type of percussion instruments	1/1x	Elwo-3869
Equine materials-used bridles, horse blankets, etc.	ns	Kear-3808
Fluorescent lamps	All	SPMN-2173
Fuel materials w/ high BTU value	25 t/wk	HIMO-3953
Gases	All	PGFL-4069
Inkjet cartridges-fax, laser, copier	ns	Omah-4178
Mercury barometers	ns	Colu-3109
Mill scale, fly ash	25 t/wk	HIMO-3955
Padding for shipping	ns	PEND-4366
Potter's wheel	1/1x	Omah-3903
Rubber matting for outdoor playground	1/1x	Hart-4121
Wall maps & charts-current	ns	Omah-2099

Generating

Diatomaceous earth	100 t/mo	Blai-2015
Power source platform, wood	ns	Omah-4224
Steel grain bins	2/1x	Chap-3873
Tarp/sign material-vinyl	ns	Omah-4167
Wallpaper books-outdated	ns	Linc-3646
Wine bottles-blue, various sizes	200/mo	Raym-2382

Paint, Glass, Coatings

Seeking

Clear glass-small pcs	ns	Omah-3001
Float glass	ns	MUIA-1949
Glass-clear cullet	200 t/mo	DWIA-1950
Glass-recyclable	ns	Blai-2793
Glass-recyclable	any	Linc-3652
Glass-recyclable	ns	Linc-4160
Glass-recyclable	Lg. quantities	Beat-3919
Glass-recyclable	Lg. quantities	Omah-3929
Paint	ns	Rose-3959

Generating

Lacquer for auto body use	50 gal/1x	Rals-4262
Paint-various colors	1500 gal/1x	Omah-1200
Paint-acrylic lacquer	750 gal/1x	GrIs-4351
Paint-various colors & finishes	Lg. quantities	Omah-3591
Paint	30 gal/qtr	Linc-2867
Powder paint	200#/mo	Kear-2636

Paper & Cardboard

(For Cardboard boxes see: Containers & Pallets)

Seeking

Cardboard for binding	ns	Linc-3176
Cardboard	ns	GEIL-3937
Cardboard	ns	Hend-3012
Cardboard-small amts for art projects	ns	Linc-3599
Cardboard, office pak	ns	Frem-4173
Cardboard & paper, baled	ns	Omah-1814
Endrolls-paper for art projects	ns	Linc-4073
Fine paper, corrugated, chipboard	Lg. quantities	Omah-3967
Paper & envelopes-unused	ns	Ogal-4389
Paper & cardboard, newspaper	Lg quantities	Beat-3920
Paper & cardboard	Any	Linc-2498
Paper & cardboard	Any	Blai-3904
Paper, fibers-for recycling	Any	NHIA-3946
Paper, waste, any grade	Lg. quantities	Wilc-3746

Material	Qty.	ID#
Paper-any grade waste	Any	MIFL-3830
Paper-8.5x11, used on one side	ns	Hend-2105
Paper & paper products	All	Frem-1934
Paper & cardboard	ns	Omah-1939
Paper, cardboard, office pak	ns	Linc-4158
Paper products	ns	Scott-4383
Paper & paper products (books, stationery, etc.)	ns	Omah-1947
Paper-shredded	Varies	Beat-2108

Generating

Books-older	ns	Orle-3648
Cardboard-shredded, waxed & non-waxed	ns	Linc-4050
Cardboard-flattened	ns	Omah-2434
Encyclopedia set-used	1 set/1x	Orle-4053
Paper-shredded	ns	Axe-4133

Plastics

Seeking

#1, #2, plastic film	Lg. quantities	Linc-3653
#2 HDPE	Lg. quantities	DPMO-4359
#1 and #2 plastics	Lg. quantities	Wilc-3915
Any	Lg. quantities	DRFL-3110
Any	Lg. quantities	MENY-2537
Bags-plastic, 55 gal	ns	Linc-3293
Bubble wrap/packing peanuts	ns	Linc-1248
Bubble wrap/packing peanuts	Lg. quantities	Edga-4004
Bubble wrap	Varies	Linc-3971
Bubble wrap/packing peanuts	ns	Linc-3833
Carpet pads-polyurethane foam	All	Omah-1623
Moldable plastics	ns	Hast-3999
PP/PE diaper scrap	Lg. quantities	UNOH-4353
PP/PE scrap, primarily diaper scrap	Lg. quantities	JAMO-3884
PVC pipe-used	6-12 pcs/1x	NoPL-4379
Packing peanuts	30 cu ft/wk	Belv-2176
Packing peanuts	ns	Linc-3312
Plastics	ns	GEIL-3936
Plastics-recyclables	ns	Beat-3202
Plastics-recyclables	ns	NHIA-3368
Plastics-recyclables	ns	Frem-4175
Plastics-recyclables	ns	Blai-3905
Plastics-recyclables	Lg. quantities	Linc-2499
Plastics-recyclables	Any	Omah-3930
Plastics, PVC, etc.	ns	DUON-3531
Plastics	Lg. quantities	Omah-3846
Plexiglass	Any	Rose-3572
Styrofoam, packing peanuts	ns	PIDa-4057
Various	ns	CLIA-1936
Zip lock bags	ngoing	Linc-3850

■ Organize a clean up ■ Reuse ■

■ Volunteer ■ Use less stuff ■

■ Get involved! ■ Recycle ■

April 22, 2004

■ Plant a garden in the park ■

Material	Qty.	ID#
<u>Generating</u>		
Adhesive films	ns	Colu-2334
Bubble wrap & foam wrap sheets (24"x24"x1/8")	ns	Linc-3228
Clear plastic liner on rolls	50,000#/yr	Vall-3857
Fiberglass rebar scraps-1' to 15' long	500#/wk	Sewa-3865
Matte liner .002 thick	17,000#/yr	Vall-3858
Packing peanuts	1 bag/wk	Linc-3696
Packing peanuts	5-6 bags/wk	Omah-4463
Plastic bags-various sizes	25,000/1x	Omah-4022
Plastic regrind-1/4" pellet	ns	Omah-2936
Polypropylene, polyester	300,000#/yr	Vall-3779
Reels-#2 plastic	8-10/day	Omah-4336
Shrink wrap	Lg. quantities	GrIs-3482
Vinyl virgin scrap pcs	300#/mo	Omah-4333
Zip-lock bags-3"x6"	300/mo	Linc-1521
Zip-lock bags-small	50/wk	Linc-1555

Rubber

<u>Seeking</u>		
Crumb rubber	ns	Auro-4511
Inner tubes	All	HAON-1422
Rubber	Lg. quantities	Omah-3910
Rubber-cured or uncured, inner tubes	ns	DUON-3532
Tires & rubber scrap	All	DMIA-4194
Tires-usable	50-60/ongoing	Full-4454
Tires-used	ns	Linc-3635
Tires-used	All	Hast-1455

<u>Generating</u>		
Cork/rubber scraps	40,000#/mo	NeCi-2416
Crumb rubber-for sale	ns	DMIA-4195
Scrap-cured & uncured	40,000#/wk	McCo-1283

Sand, Gravel, & Clay

<u>Seeking</u>		
Clay, dirt, sand	ns	Colu-1974
Clay for art projects	ns	Omah-3901
Limestone-small pcs	ns	Linc-4427
Pea gravel	5 t/1x	Linc-4498

<u>Generating</u>		
Molding sand	Lg. quantities	Hast-3231
Used glass blasting material	Lg. quantities	Xxxx-3049

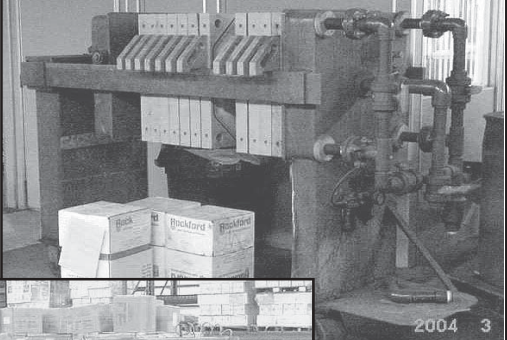
Surplus Equipment

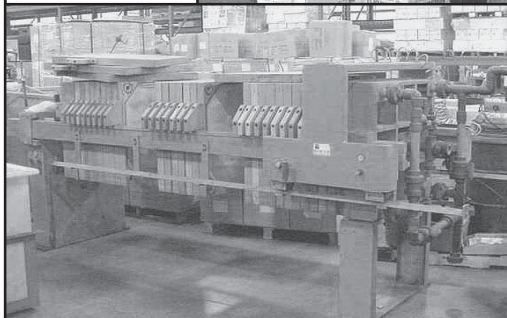
(See also Durables & Electronics)

<u>Seeking</u>		
Aircraft tow, gas-powered	ns	Beat-3601
Appliances-major	All	Frem-1909
Appliances	Any	Omah-2482
Art supplies, lumber, woodworking supplies	ns	Linc-3237
Athletic supplies & equipment	ns	Stra-4421
Atlas	1/1x	Linc-3633
Auxiliary plastic processing equip	1/1x	Hast-4128
Balers, recycling equipment	All	DRFL-4068
Binders, 3-ring	ns	Linc-2183
Binoculars or spotting scopes	ns	Linc-4466
Book rack-upright, for paperbacks	1/1x	Plym-4066
Bookshelves	ns/1x	Alli-3116
Bookshelves-large	ns	Wave-4480
Bookshelves, shelving units	ns/1x	Spal-3650
Carousel projector	1/1x	Xxxx-3033
Chairs-office	2/1x	Omah-4087

Material	Qty.	ID#
Chairs-student, large	ns	Harr-4201
Changing tables for adults	2 sets/1x	Norf-4507
Children's scissors	30-40/1x	Norf-3615
Cleaning supplies	ns	Ogal-4390
Cleaning supplies	ns	Stra-4420
Cleaning supplies	ns	Scott-4382
Computer tables	4/1x	Linc-3632
Computer desks, chairs	ns	Linc-4153
Commercial beverage cooler, bar stools, chairs	ns	Kear-3741
Cubicle partitions	ns	Omah-3431
Desk & chair-student	ns	Linc-4413
Desks-students	ns	Wave-4477
Desks	3/1x	Linc-4428
Desks-teacher and student	ns	Murd-4293
Display racks for clothing	ns	Linc-4152
Easel	1/1x	Xxxx-3034
Electrical discharge machine	1/1x	Hast-4126
Employee lockers	2 sets/1x	Norf-3841
File cabinets-2 or 4 drawer	1-2/1x	Omah-4381
File cabinets, fire-proof	ns	Omah-2970
File cabinets, fire-proof	ns	Linc-4054
File cabinets	2/1x	Linc-4374
File cabinets	4/1x	Linc-4429
File cabinets	ns	Linc-4412
File cabinets-2 or 4 drawer	6+/1x	Frem-3659
File cabinets	2/1x	Beat-2753
File cabinets, computer desks, office chairs	Varies	Beat-2625
Folding machine for brochures	1/1x	Plai-3951
Folding table & chairs	ns	Linc-4148
Furniture-bar stools, chairs, folding chairs, tables	ns	Kear-3916
Furniture-couches, coffee tables, etc.	ns	Linc-3558
Gym mats-for floor and wall	ns	Linc-3451
Hangers-plastic, for clothing	ns	Linc-3523
Hospital equipment-used	ns	Omah-4106
Household items (bedding, dishes, etc.)	ns	Linc-3941
Household materials, clothing, furniture	ns	Linc-4061
Housewares, store fixtures, misc. durable goods	ns	Linc-3118
LCD projector	1/1x	Ogal-4387
Lawn/garden tractor	1/1x	NoPl-4380
Lawnmower-riding or push	1/1x	Alli-3825
Lockers for schools	ns	Wyno-4164
Machine tools-later models	ns	Hast-4129
Machining equipment	ns	Wins-4492
Medical equipment, used	ns	Norf-4185
Medical equipment, used	ns	Linc-4169
Microfilm reader/printer	1/1x	Ord-3163
Microfilm reader/printer	1/1x	Morr-3372

Available
DeWi-4669
3/1x





**Plate and
frame type
filter
presses,
Used, for
sale**

Material Qty. ID#



Available Omah- 4663
Electric organ - Wurlitzer 2700

Microform reader/printer	1/1x	LaVi-4202
Molding machine-plastic injection	1/1x	Hast-4125
Nebraska flag	1/1x	Linc-3634
Office chairs	ns	Wave-4478
Office desks, furniture	ns	Linc-4395
Office furniture	ns	Omah-4410
Office furniture	2/1x	Omah-2980
Office furniture	1x	Omah-3752
Office furniture-file cabinets, chairs, etc.	2/1x	Beat-2753
Office equip.-Desks, shelving, filing systems, etc.	ns	Hend-2107
Office supplies	ns	Omah-4411
Office supplies	ns	Omah-4394
Office supplies	ns	Ogal-4388
Office supplies, furniture	ns	Omah-4370
Office waiting chairs	2/1x	Beat-3156
Overhead projector	1/1x	Ogal-4386
Plastic injection mold bases	1/1x	Hast-4127
Playground equipment-used	ns	Geri-4419
Playground equipment	ns	Beat-3502
Pocket folders, binders	ns	Linc-3763
Podium, easels-for display	ns	Norf-2361
Printing press-for parts	1/1x	Fall-4368
Printing presses, dry cleaner equip., etc., outdated	All	Omah-2480
Science equipment-for schools	All	Pend-1225
Science lab furniture & equipment	ns	Omah-2098
Shelves	ns	Ogal-4385
Shelving	ns	Bart-3657
Shelving for books	1/1x	Plym-4067
Shelving-metal or wire	ns	Omah-4431
Shop tools	ns	Wins-4494
Shop tools-for schools	ns	Hend-2106
Slide projector	1/1x	Spal-4156
Sound deadening material	ns	Axte-4517
Sound system-professional quality	1/1x	Linc-3644
Sports equipment-weight training, mats, hurdles	ns	Elba-3674
Stapler and pencil sharpener-heavy duty	1/1x	Linc-3348
Tables	1x	Crof-3758
Tables & chairs-small	ns	Wave-4479
Table-round, conference style	1/1x	Linc-4426
Tables-long, conference style	2-4/1x	Crof-4430
Time clock	1/1x	Loup-3810
Time clock	1/1x	Linc-3834
Typewriter w/ display board	1/1x	Xxxx-4447
TV, VCR	1/1x	GrIs-3918
Water testing equipment	ns	Linc-2442
Welding equipment	ns	Wins-4493
Wheelchairs-push or electric	ns	Norf-3395
Wheelchairs, walkers, positioning chairs, etc.	ns	Coza-3105
White goods and TVs	ns	Cook-3454
White goods	ns	Hast-1832
Woodworking tools	ns	Wins-4495
Woodworking and other shop tools	ns	Gibb-3665

Material Qty. ID#

Workout equipment-treadmills, airdynes, etc.	ns	Linc-3427
Generating		
Baler for newspaper	1/1x	Neli-4273
Check endorser-good condition, Martin Yale 938	1/1x	Omah-3542
Desk-metal	1/1x	Linc-4105
Electric motors-for sale	ns	Omah-3104
Forms burster-good condition	1/1x	Omah-3543
Hog feeders-wooden shed type	1each	CeBl-3498
Light fixtures-incandescent	15/1x	Cret-4136
Microfiche readers	2/1x	Cent-4209
Molding machine-plastic injection mold bases	1/1x	McCo-4245
Pine flooring	750 linear ft/1x	Peru-4256
Salvaged material from barns	ns	Peru-4318
Science lab counters	18/1x	Cret-3986
Test tube rack	1/1x	Cret-3987
Toner for Minolta copier	3 bxs/1x	Linc-4501
Tubing-plastic, anhydrous ammonia	200 ft/1x	McCo-4434
Wall shelving	5/1x	Omah-4474

Textiles & Leather

Seeking		
Carpet	ns	Kear-3742
Clothing	ns	Linc-3119
Clothing, linens, etc.	All	NHIA-4111
Clothing, used	ns	Norf-4186
Clothing—wearable, in good condition	All	CBIA-1962
Fabric/batting for quilts	ns	Linc-4017
Polyester fiberfill	Any	Lemo-3450
Quilt batting	ns	Axte-3854
Quilt batting-100% cotton	ns	Linc-3853
Textiles-fabric	ns	StPa-4362
Vinyl or leather scrap	ns	Linc-3175
Web strapping-3/4" to 2"	ns	Milf-1547
Yarn and thread	Lg. quantities	Omah-3914

Generating		
Fabric, leather, foam scraps	ns	Linc-3863
Upholstery fabric	500-1000 yds.	Arap-2084
Vinyl-scrap, 11 different colors	Lg. quantities	Suth-2114
Yarn-industrial	5,000#/mo	McCo-1282

Wood

(For wood pallets see: Containers & Pallets)

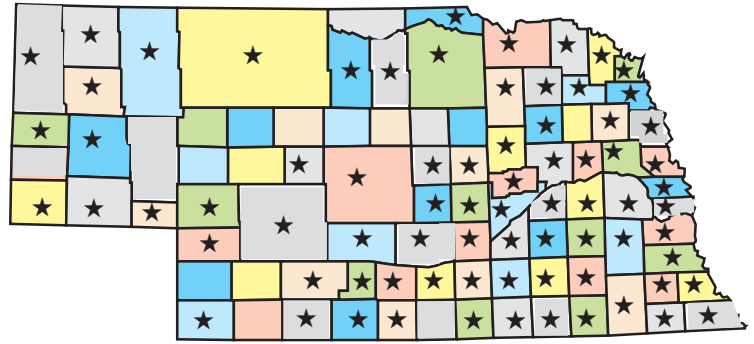
Seeking		
Barn wood-for stair tread & risers	ns	Linc-1518
Sawdust	ns	ANIA-3927
Wood	ns	Omah-4439
Wood scraps, pallets	ns	Linc-3829
Wood waste-all types, fee involved	Lg. quantities	GrIs-3704
Wood and pallet scrap	Lg. quantities	Omah-4036
Wood waste	Lg. quantities	CAIA-4226

Generating		
Cable spools	10/mo	Omah-2540
Lumber waste-hardwood	4. cu yds/mo	Omah-4471
Oak-rough or surfaced cut-offs	2 semi lds/yr	Beat-1372
Sawdust	ns/bags or loose	Norf-3940
Sawdust	5 brls/wk	Xxxx-3898
Sawdust	ns	Omah-4369
Sawdust/shavings	144 cu yds/mo	Omah-4472
Wood chips & mulch	Lg. quantities	GrIs-3703
Wood mulch	Lg. quantities	Linc-3972
Wood scraps laminated	2 brls/day	Xxxx-3897
Wood scrap, pine	30,000#/mo	YASD-4212
Wood scraps-cedar	300#/mo	Omah-4332
Wooden spools	ns	Norf-4110
Wood waste	Lg. quantities	Norf-4242

The Nebraska Materials Exchange Program Wants You!

Currently 75 counties in Nebraska are involved with the Materials Exchange Program. Participating counties are denoted by stars on the map at right. Exchange representatives would like to have **ALL** counties in Nebraska actively participating in the program.

If you or someone you know hasn't joined yet, the Materials Exchange Program wants you! Call 800-486-4562 (or in Lincoln call 486-4622.)



The following counties currently have no participants in the Materials Exchange Program:

Arthur Blaine Franklin Garfield Hayes Hooker McPherson Thomas Wheeler
Banner Chase Garden Grant Hitchcock Keya Paha Loup Stanton

#ID Codes

Panhandle

Alli- Alliance	Harr- Harrison	Morr- Morrill
Bay- Bayard	Kimb- Kimball	Rush- Rushville
Chad- Chadron	Mina- Minatare	Scot- Scottsbluff
Craw- Crawford	Mitc- Mitchell	Sid- Sidney
Geri- Gering		

West Central

Ains- Ainsworth	Elwo- Elwood	McCo- McCook
Arap- Arapahoe	Gran- Grant	NoPl- North Platte
Bart- Bartley	John- Johnstown	Ogal- Ogallala
Bass- Bassett	Lemo- Lemoine	Paxt- Paxton
Benk- Benkelman	Lexi- Lexington	Suth- Sutherland
Brok- Broken Bow	LoPi- Long Pine	Vale- Valentine
Brul- Brule	Mayw- Maywood	
Cozd- Cozad	Maxw- Maxwell	

Northeast

Albi- Albion	Hoop- Hooper	Pend- Pender
Alle- Allen	Kenn- Kennard	Plai- Plainview
Arli- Arlington	Laur- Laurel	PCen- Platte Center
Beem- Beemer	Leig- Leigh	Schu- Schuyler
Beld- Belden	Lind- Lindsay	Scri- Scribner
Blai- Blair	Lyon- Lyons	SoSc- So. Sioux City
Butt- Butte	Macy- Macy	Wake- Wakefield
Clar- Clarkson	Madi- Madison	Walt- Walthill
Colu- Columbus	Monr- Monroe	Wash- Washington
DaCi- Dakota City	Neli- Neligh	Waus- Wausa
Dodg- Dodge	Newc- Newcastle	Wayn- Wayne
FtCa- Fort Calhoun	Niob- Niobrara	WePo- West Point
Frem- Fremont	Norf- Norfolk	Winn- Winnebago
Full- Fullerton	Nort- North Bend	Wins- Winside
Geno- Genoa	Osmo- Osmond	Wyno- Wynot
Hart- Hartington	O'Ne- O'Neill	

Other

Xxxx- Confidential
 Codes with all capital letters refer to cities located outside Nebraska. Please contact a Materials Exchange representative for more information.

Southeast

Adam- Adams	Fall- Falls City	Plat- Plattsmouth
Aubu- Auburn	Fill- Filley	PIDa- Pleasant Dale
Auro- Aurora	Frie- Friend	Plym- Plymouth
Beat- Beatrice	Gene- Geneva	Prin- Princeton
Belv- Bellevue	Gret- Gretna	Raym- Raymond
Benn- Bennet	Hebr- Hebron	Roca- Roca
BISp- Blue Springs	Itha- Ithaca	Sewa- Seward
Brow- Brownville	LaPl- LaPlatte	Ster- Sterling
CeBl- Cedar Bluffs	LaVi- LaVista	Syra- Syracuse
Cere- Ceresco	Linc- Lincoln	Tecu- Tecumseh
Cook- Cook	Malc- Malcolm	Utic- Utica
Cret- Crete	Mead- Mead	Vall- Valley
Davi- David City	Milf- Milford	Valp- Valparaiso
Dent- Denton	Murd- Murdock	Wave- Waverly
Dill- Diller	NeCi- Nebraska City	Waho- Wahoo
Doug- Douglas	Osce- Osceola	Wate- Waterloo
Eagl- Eagle	Omah- Omaha	Weep- Weeping Water
Elmw- Elmwood	Pana- Panama	West- Weston
Elkh- Elkhorn	Papi- Papillion	York- York
Exet- Exeter	PaCi- Pawnee City	Yuta- Yutan
Fair- Fairbury	Peru- Peru	

Central

Alda- Alda	Doni- Doniphan	Orle- Orleans
Alma- Alma	Elba- Elba	Palm- Palmer
Arca- Arcadia	Gibb- Gibbon	Polk- Polk
Auro- Aurora	GrIs- Grand Island	RedC- Red Cloud
Axte- Axtell	Harv- Harvard	Rose- Roseland
Bass- Bassett	Hast- Hastings	StPa- St. Paul
Boel- Boelus	Hend- Henderson	Sarg- Sargent
Blue- Blue Hill	Hold- Holdrege	Shel- Shelton
Cent- Central City	Kear- Kearney	Spal- Spalding
Chap- Chapman	Loup- Loup City	Stap- Stapleton
Coms- Comstock	Marq- Marquette	Sup- Superior
Dave- Davenport	Mind- Minden	Sutt- Sutton
Desh- Deshler	Ord- Ord	Wilc- Wilcox

Businesses and organizations who have recently become participants in the Nebraska Materials Exchange

Acme Equipment	G&G Mfg.	Leukemia Lymphoma Society	Royal Theater
Alliance Tractor & Implement	Gering Valley Plumbing & Heating	Mercy Housing Midwest	Rushville Golf Course
Angels in the Makin'	Herbergers	Merry Manor	St. Matthew's Episcopal Church
Anti-Defamation League	Hope Medical Outreach	Nebraska Methodist College	Stateline Bean
Bruce Furniture	Interfaith Health Ministry	Nebraska Safety Council	Trade Well Pallets
Carl T. Curtis Health Ed. Ctr.	Janie Lynn Textiles	Oasis Staffing	White's Woodworking
Center for Rural Affairs	Jon's Salvage	Omaha Performing Arts Society	Wright Way Antifreeze Recycling
Ecostrat	Kids Planet	PMM Trading	
Furst-McNess	Krayon Campus	Rosemont Day Care	

Nebraska Materials Exchange Program Application

The purpose of this form is to identify any wastes or surplus materials from one business, industry or school that could be utilized by another. The more information you provide, the more likely an exchange will occur. Please type or print. Questions? Call Keep Nebraska Beautiful at 1-800-486-4562. (In Lincoln call 486-4622)

Company/Organization

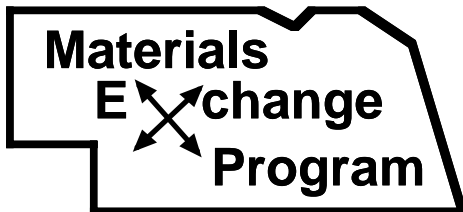
Contact	Date	
Mailing Address		
City	State	ZIP+4
Phone () 	Fax () 	
Email Address		

Note: Please complete all applicable items. If you have more than one item, please copy this form for each material, or attach a list of materials and the quantity of each one.

1. Is your company/organization a 501(c) 3 nonprofit organization? ___ Yes ___ No
2. May we release your name/address/phone to interested parties? ___ Yes ___ No
3. Are you SEEKING or GENERATING this material? ___ Seeking ___ Generating
4. **Please Specify Material Here:** *Generic name or primary usable constituent (If plastic, list mfg. & commercial name/grade #):

5. **List quantity** (in units: pounds, etc.): _____ **Per:** Day Week Month Quarter Year 1X only
6. **Physical state:** (if applicable) Liquid Slurry Solid Semi-solid Sludge Dust Cake Gas Other _____
7. **Packaging:** (circle one) Bulk Drums Dumpsters Gaylords Pallets Bales Other _____
8. **General information as known:** chemical composition, type of plastic, main ingredients, cost, pH, toxicity, reactivity, color, particle size, flash point, total solids, purchase date, industrial process generating this material, contaminants, etc.

9. **Available to interested parties:** (if applicable) ___ Sample ___ Lab Analysis ___ Independent Analysis
10. **Please list any items your company would be willing to donate to schools or nonprofit organizations.**
 (Working computers, office furniture and equipment, cleaning supplies, etc.)



Thank you for your interest in the Nebraska Materials Exchange Program. We will keep in contact with you regarding your application, as well as send our quarterly materials exchange newsletter, *The Link*.

Please mail or fax this form to:

Keep Nebraska Beautiful,
3201 Pioneers Blvd., Suite 306, Lincoln, NE 68502-5963

Fax: (402) 486-4563

Applications can also be submitted via the website at www.knb.org



Do Your Part To Help Keep Nebraska Beautiful! Become A Member Today!

Name _____
 Co./Org. _____
 Mailing Address _____
 City/State/Zip _____
 Phone: () _____ Fax: _____

_____ Sustaining Member\$1000+
 _____ Sponsoring Member \$500-999/yr.
 _____ Supporting Member\$100-499/yr.
 _____ Chamber of Commerce\$50/yr.
 _____ Community-Pop. over 5,000\$100/yr.
 _____ Community-Pop. under 5,000\$50/yr.
 _____ Sr. Citizen/Student \$10/yr.
 _____ Non-profit/Civic Org./School\$30/yr.
 _____ Family \$20/yr. or \$45/3 yrs.
 _____ Individual \$15/yr. or \$30/3 yrs.

Your paid membership entitles you to several benefits. Please indicate the benefits you would like to receive below. Items not checked will not be sent and that part of your contribution will be used on educational programs.

- A KNB canvas shopping bag
- Quarterly mailings of the KNB newsletter *Waste Paper*
- Quarterly mailings of *The Link*
 - Via electronic email—address _____
- Information on workshops & conferences

Total amount enclosed \$ _____

Send your check and membership form to:

Keep Nebraska Beautiful
3201 Pioneers Blvd., Suite 306
Lincoln, NE 68502-5963

For Sustaining, Sponsoring & Supporting Members Only:

- Corporate member wall plaque (or brass disc for renewals)
- A free copy of Keep America Beautiful's *Waste in the Workplace*

Make Checks Payable to: Keep Nebraska Beautiful

The Link is published quarterly by Keep Nebraska Beautiful, 3201 Pioneers Blvd., Suite 306, Lincoln, NE 68502.
Telephone: (402) 486-4562 Fax: (402) 486-4563 Web Site: <http://www.knb.org> Email: info@knb.org
Funding for this program is provided by the Nebraska Waste Reduction and Recycling Incentive Fund, administered by the Nebraska Department of Environmental Quality, and through memberships and contributions of many of our participants.



Governor's Council to
 Keep Nebraska Beautiful
 3201 Pioneers Blvd., Suite 306
 Lincoln, NE 68502-5963