

The Link



Materials Exchange Program

A Quarterly Materials Exchange Newsletter SUMMER 2003

Board of Directors

GEORGE ACKER
Ogallala
CINDY ADKINS
Cozad
JOE BAXTER
South Sioux City
ROGER BEHRNS
Louisville
MATT BOERKIRCHER
Kearney
CHERYL GERKINS
Lincoln
JIM GOEKE
North Platte
DENNIS GRAMS
Lincoln
ROD HORN
Sidney
CHRISTOPHER JERRAM
Omaha
JOHN KINTER
Columbus
BETH ANN KERNES KRAUSE
Julian
BRUCE LUHR
Seward
TOMAS MILLER
Norfolk
PAUL O' HARA
Lincoln
DAVE OSTDIEK
Gering
MARK PEYTON
Gothenburg
MIKE SCHRAD
Omaha
DICK VARNER
Omaha
CINDY WAGNER
Ashland
KEVIN WARNEKE
Omaha

EX-OFFICIO MEMBERS
MIKE JOHANNIS
Governor, State of Nebraska
MIKE LINDER
Director, Dept. of
Environmental Quality
DAVID STERN, EMERITUS
Omaha

JANE POLSON
Executive Director

Kearney Students Take Flight With Special Art Project

What makes the Nebraska Materials Exchange Program unique is our effort to assist schools and nonprofit organizations in locating needed materials at low or no cost. Over 30% of our listings are from these organizations. When the Exchange learns of highly sought-after items like computer systems or unique materials for art projects, dozens of schools and organizations are contacted.

That was the case when Morris Printing in Kearney alerted us to pallets of styrofoam pieces that were accumulating in their warehouse. Rather than landfill the material, Plant Manager Randy Humston thought the Exchange might be able to find a reuse or recycling option for the material.

Believing it might be useful in art projects, Exchange Facilitator Kathleen Jacobson began calling area schools about the styrofoam. When she contacted Pat Zeimet, the Principal of Kenwood Elementary in Kearney, a potential match began to take shape.

Pat was looking for material for a very special art project. The students at Kenwood had been asked to construct table decorations and display pieces for the National Audubon Society's Annual Rivers & Wildlife Celebration to be held in March. The event would celebrate the Sandhill cranes which migrate through the area each spring.

After deciding on a design for the centerpieces, the styrofoam was collected from Morris Printing. Kenwood first grade students began constructing small crane centerpieces, and their impressive creations were unveiled at the banquet held during the 3-day event.

To raise funds for local charities, the larger display pieces will be auctioned off in October. Until then, they can be seen on display around Kearney. Maps of where the crane sculptures are lo-

cated can be picked up at local motels, or you can contact the Kearney Chamber of Commerce.

We are proud of our efforts to help schools and nonprofit organizations locate needed and unique items. The goal of the Materials Exchange is to save these organizations money, while finding reuse options for unwanted material!

There are still pallets of styrofoam available at Morris Printing. If you are interested in the material, please call Randy Humston at 308-236-7888.



Kenwood first graders working on the crane centerpieces



Crane centerpieces constructed from foil with styrofoam used as the base

Become a Keep Nebraska Beautiful member today! See membership form on page 12.

WASTE REDUCTION BLOSSOMS AT FARMLAND FOODS

Wood chips, manure, and straw...

To a gardener, these words mean compost. But at Farmland Foods in Crete, this material was a nuisance waste product generated from their hog barns and transport trailers. Thousands of pounds were disposed of every year.

In June 2002, Farmland recognized that a valuable commodity was literally being thrown away. Shortly thereafter, a pilot composting program was implemented.

This spring the compost was used in planting 75 tree seedlings around the facility. It was also utilized as compost and mulch in a red, white, and blue flower garden near the main office building. Future beautification efforts will include replacing a concrete island at the plant entrance with trees and flowers. Of course, the compost will also be used as a valuable soil amendment in this project.

To date, 100,000 pounds of waste has been diverted from the landfill by the composting program. Congratulations to Farmland Foods for reducing their waste stream through this innovative project and beautifying their facility in the process.



\$\$\$\$\$\$\$\$\$\$\$\$\$\$\$\$
 \$ WHY SHOULD YOU \$
 \$ PARTICIPATE? \$
 \$ WE MIGHT BE ABLE TO SAVE \$
 \$ YOU MONEY! \$
 \$\$\$\$\$\$\$\$\$\$\$\$\$\$\$\$\$

A company in Columbus was recently able to divert 15,000# per month of metal shavings from the landfill to a metal recycler.

An Omaha company had 9 pallets of unused labels. Instead of sending them to the landfill, schools and nonprofit organizations in the area were able to use them.

A book bindery in Southeast Nebraska was landfilling 25 tons of paper and cardboard scrap each month until another company started picking up the scrap for recycling.

A Lincoln nonprofit organization received a large donation of office furniture. Since they couldn't use it all, they were able to share their good fortune with other nonprofit organizations in the area.

These companies and organizations have something in common. The Materials Exchange Program was able to help them save landfill fees by diverting material for recycling or reuse.

Some companies might think participation in our program would cost them extra time and money. In fact, there is no charge to list in the Materials Exchange Program. You don't have to "join" Keep Nebraska Beautiful. ***There is no service fee, membership charge, or dues.***

There is also minimal time involved in participating. Our Facilitators make quarterly update calls or send emails to participants to verify active listings. In addition, you may be contacted if we believe we have a match for your listed material, or if there is material in which you might be interested.

Since the Materials Exchange Program began in 1994, we have helped participants save over \$800,000 in landfill fees and hazardous waste disposal costs. ***If you have any questions about how the Program might be able to save you money, please contact us at 402-486-4622.***



Tree seedlings were purchased from the Natural Resource District



The red, white, and blue garden is lined with brick salvaged from the landfill.

Current Listings



To inquire about any items, write Keep Nebraska Beautiful: 3201 Pioneers Blvd., Suite 306, Lincoln, NE 68502-5963; call 1-800-486-4562 (in Lincoln (402) 486-4622); fax (402) 486-4563; or visit our website at: <http://www.knb.org>

Material	Qty.	ID#
Highlighted Items		
New Items Since Spring 2003 Issue		

Material	Qty.	ID#
<i>Seeking</i>		
Aluminum, tin, precious metals	Lg. quantities	Ogal-4283
Appliances-for recycling	Lg. quantities	Ogal-4284
Athletic equipment for schools	ns	Murd-4294
Boxes-corrugated	ns	Frem-4232
Boxes-corrugated	ns	Omah-4231
Computer-486 or better/printer	1/1x	Craw-4278
Computer-486 or better/printer	1/1x	Geno-4274
Craft items	ns	Linc-4319
Desk and chair-office	1/1x	Walt-4310
Desks-teacher	ns	Murd-4293
Desk-wooden	1/1x	Geno-4275
Drums-55 gallon	ns	Full-4240
Drums-55 gallon, plastic	12/1x	Linc-4264
Educational materials	ns	Linc-4320
Gaylords	ns	Linc-4303
Glass-brown, for recycling	Lg. quantities	Ogal-4282
Laptop computer	1/1x	Craw-4277
Mailing tubes	ns	Newc-4238
Newspaper, cardboard, paper	Lg. quantities	Ogal-4280
Pallets	ns	Hast-4258
Pallets-various sizes	ns	Linc-4302
Pallets-4 way, 48x40	All	NAKS-4298
Plastics-#1 and #2	Lg. quantities	Ogal-4281
Scanner	1/1x	O'Ne-4271
Shelving-storage or display	ns	Geno-4276
Slip sheets-cardboard	ns	CLIA-4225
Twin bed w/ mattress	1/1x	Walt-4311
Typewriter-electric	1/1x	Scott-4312
Typewriter-electric	1/1x	Linc-4313
Wood waste	Lg. quantities	CAIA-4226
Wood scraps	Lg. quantities	Linc-4249

<i>Generating</i>		
Absorbent granules	Lg. quantities	Linc-4279
Boxes-corrugated, 3'x6'	semi load/1x	Colu-4227
Boxes-3"x3"x9"	1000/1x	Linc-4317
Cardboard-2' x 8' sheets	40/wk	Linc-4295
Computer carts-portable	12/1x	O'Ne-4272
CPUs w/o CD-Roms	20-30/1x	Omah-4246
Drums-55 gal., metal	15/mo	Linc-4244
Egg shells	15 t/day	Omah-4300
Lacquer-for auto body use	50 gallon/1x	Rals-4262
Metal-various types	Lg. quantity/1x	Colu-4229
Molding machine, plastic injection	1/1x	McCo-4245
Office furniture-desks, etc	ns	Linc-4230
Newstraw baler/shredder	1/1x	Neli-4273
PP/PE non-woven diaper scrap	500,000#/mo	WPNY-4234
Packing material-thin styrofoam	ns	Linc-4296
Pallets	4-6/mo	Linc-4291
Pallets	12-15/mo	Ogal-4263
Pallets, various sizes	300-400/1x	Ogal-4248
Pallets, wood scrap	trk load/wk	SHIA-4254
Pallets, various sizes	50-100/mo	Linc-4243

Material	Qty.	ID#
Pallets-wooden	ns	Ogal-4252
Pine flooring	750 linear ft/1x	Peru-4256
Printers-dot matrix	20-25/1x	Omah-4247
Salvaged material from barns	ns	Peru-4318
Spools-plastic, 12" round	6/mo	Linc-4297
Tires	ns	Full-4241
Toner for Canon copier	2 ctns/1x	Linc-4314
Washing machines-commercial	1-8/1x	Peru-4255
Wood crates	trk load/wk	SHIA-4253
Wood waste/mulch	140 cubic yds/wk	Frem-4301
Wood waste	Lg. quantities	Norf-4242
Zinc dust	80,000#/mo	QUIL-4257

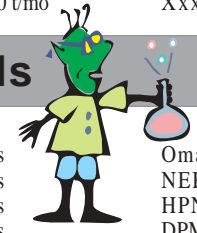
Ag Products

Material	Qty.	ID#
<i>Seeking</i>		
Cattle hides	All	Belv-1051
Fallen farm & feedlot animals	All	Belv-1052
Locker & grocery meat scraps	All	Belv-1053
Organic products	Lg. quantities	Xxxx-3932
Organic waste	All	MIMN-4197
Packing house by-products	All	Belv-1054
Packing house by-products	All	Pend-2478
Straw bales—square wheat, oat, or rye	ns	Linc-1519

<i>Generating</i>		
Cornstarch	100 t/mo	Xxxx-3576
Food waste	Lg. quantities	Linc-3949
Syrup products	50 t/mo	Xxxx-3577

Chemicals

Material	Qty.	ID#
<i>Seeking</i>		
Chemical waste	ns	Omah-3513
Chemicals-bulk organic or inorganic	ns	NERI-3140
Chemicals for resale	ns	HPNJ-2391
Ferric chloride, spent	ns	DPMO-4051
Hazardous waste, chemicals, pesticides	Any	CAMA-4040
Hazardous chemicals, acids, alkalis	Lg. quantities	SLMO-2820
Hazardous materials	ns	Linc-3051
Lime-Ca(OH)2	5,000#/mo	Blai-2016
Lime by-product	Lg. quantities	Scri-2166
Polyols & isocyanates	Lg. quantities	ORAN-3977
Solvents, detergents, dyes, pigments	ns	WANJ-3596



If you receive or dispose of any items through a referral from the Materials Exchange Program, please call and let us know. It is essential in tracking the success of our program. **Thank you!**

.....

The Materials Exchange Program has facilitated over 2000 matches of items for reuse or recycling.

t=ton	yd=yard	ml=milliliter	semi=semi-truck	cont=container
g=gram	qtr=quarter	wk=week	cu. yd.=cubic yard	1X=one-time amount
L=liter	gd=gaylord	plts=pallets	dmpr=dumpster	ns=amount not specified

Material	Qty.	ID#
Generating		
Antifreeze-used	2 drms/mo	Colu-4096
Chemicals from circuit board mfg	ns	Linc-4219
NaOH solution	5,000 gal/wk	YASD-3562
Non-acetone polish remover	3,000 gal/1x	Omah-3816
Polyols & isocyanates	Lg. quantities	ORAN-3978

Construction Materials

Seeking		
Asphalt shingle scrap	Lg. quantities	Wave-3950
Bricks	ns	Linc-2865
Building materials	All	Linc-4189
Construction materials-insulation, windows, siding	ns	Linc-3139
Construction materials-anything usable	ns	Omah-3319
Construction material-doors, windows, appliances	1x	Roca-3859
Doors, windows, cabinets	ns	Linc-1517
Hardwood gym flooring-used	All	Wyno-1264
Lumber and other shop supplies	ns	Gibb-3664
Posts (cedar logs, metal irrigation pipe, oil pipe)	ns	Linc-2518
Roofing material	Lg. quantities/1x	Brow-3962
Rubble-dirt, asphalt, concrete	ns	Linc-3120
Shingles, tar paper	ns	Linc-3970
Shop class materials	ns	Elba-3671
Usable construction supplies & materials	ns	Beat-2643

Generating		
Brick school house and all contents	1/1x	Blue-3745
Cabinet material scrap w/ formica	1 dmpr/mo	GrIs-1253
Concrete bunker silo wall supports	25/1x	Chap-3872
Concrete, rubble	160 cu yds/1x	Chap-3871
Construction material-varies	ns	Linc-3259
Crate, pallet lumber	ns	Xxxx-3893
Drywall scrap	10 plts/mo	GrIs-1249
Hardboard siding scrap	3-4 dmpr/mo	GrIs-1250
Laminated sink cutouts, approx. 22" x 33"	Varies	Omah-1632
MBO board-20"x48"x1/2"	1000/1X	Linc-3501
OSB (wafer board) scrap	3-4 dmpr/mo	GrIs-1251
Particle board scrap	2-3 dmpr/mo	GrIs-1252
Trusses & rafters w/ plates—broken	1 dmpr/mo	GrIs-1258
Vinyl siding scrap—all colors	3-4 dmpr/mo	GrIs-1256
Window pane glass-small pcs	ns/1x	Colu-3436

Containers & Pallets

Seeking		
Bags-lined & unlined, paper	ns	Geil-3938
Boxes-cardboard, various sizes	ns	Beat-2065
Boxes-cardboard, 16"x16"x30"	300/yr	Milf-1545
Boxes-cardboard, 16"x16"x12"	Lg. quantities	Suth-2116
Buckets-5 gal, food grade	20/yr	Raym-3767
Buckets-5 gal, plastic, prefers food grade	ns	Linc-3206
Buckets-5 gal, plastic, w/ handles	ns	PIDa-4063
Containers-totes, tins, buckets	ns	Bell-4088
Crates-Wood	12/mo	Linc-2788
Drums-fiber, 7.5 gal w/ lid	ns	Norf-4092
Drums or buckets—plastic, 5 to 55 gal	All	Kear-1102
Drums-plastic, 30 gal	10-20/1x	Linc-3468
Drums-plastic, 20 & 35 gal	ns	Norf-2732
Drums-plastic, 55 gal	ns	Linc-1423
Drums-steel, 55 gal	ns	Rose-3958
Drums-plastic, 55 gal	All	Linc-1872
Drums-plastic or steel, any size	ns	Hast-2165
Drums-55 gal., plastic, reg & open top	All	Vall-1003
Drums-steel, 55 gal w/ ring lid	ns	Beat-2566
Drums & totes-steel & plastic, 35 & 55 gal	All	FtCa-1276
Drums-steel, 55 gal w/ snap ring lids	50-100/wk	SoSc-3218
Drums-steel & plastic	All	Omah-1173
Drums-steel, w/ lids	70-80/yr	Davi-3586
Gaylords	ns	Wilc-3747

Material	Qty.	ID#
Gaylords	ns	Linc-4170
Gaylords	ns	DRFL-3563
Gaylords	ns	Norf-3463
Gaylords	100/mo	Linc-3404
Polytotes-225 to 345 gal	ns	Omah-3726
Storage containers, food grade	ns	Norf-4180
Totes	ns	Omah-3250

Pallets—Wood—Seeking

All	BISp-1391	48x48, 200/mo	Linc-2789
All	SHIA-3824	48x48-Varies	Linc-2647
Lg. quantities	BRIA-1945	42x48, 200/mo	GrIs-2816
All, only 40x48	Frem-1057	48x40, All	Omah-1381
All, only 40x48	GrIs-1394	Various, min. 32x30	Omah-2060
36x40-lg. quant.	Hast-1626	Various sizes, lg quantities	Cook-4157
4 way, 48x40, ns	Linc-2975	48x48, ns	Omah-3093
Trailerloads	Linc-2260	40x42, lg. quantities	Omah-3196

Generating

Boxes-20"x 40"x 20"	40-50/yr	Milf-1546
Boxes-18"x 18"x 18"	30-40/mo	Omah-1753
Boxes, various sizes	ns	Omah-1886
Buckets-metal, 2.5 gal, with handle	10/wk	Linc-3308
Buckets-3.5 gal, food grade	ns	Linc-4042
Buckets-5 gal, metal w/ lids	5-10/wk	GrIs-1858
Buckets-#2 plastic, black	50-100/mo	Omah-1795
Buckets-5 gal	24/wk	Omah-2011
Burlap bags-originally contained coffee	2000/mo	Omah-3392
Crate, pallet lumber	ns	Xxxx-3893
Drums-fiber	200-300/yr	Omah-1751
Drums-steel w/ 2 bungholes	25/mo	Norf-3939
Drums-steel, 35 gal	ns	Linc-1642
Drums-fiber w/ lids	20/mo	Omah-3817
Gaylords	ns	DRFL-3900
Gaylords	40/wk	Omah-1976
Gaylords	30-50/mo	GrIs-3728
Kegs, 4'x4' hexagonal shape	Varies	Cozd-2142
Pallets, plastic	ns	Frem-3957
Pallets-#2 plastic, 12"x 23"x 2"	500-600/yr	Cozd-1364
Poly totes-225-345 gal	ns	Omah-3726
Shipping/mailing tubes	ns	Linc-4205
Super sacks	15/wk	Hast-1871
Tote bags-2000#, nylon or plastic	12/wk	SCIA-3236
Totes-275 gal on pallet	2/mo	Cozd-2017
Wooden spools, pallets	50/mo	Colu-3792

Pallets—Wood—Generating

20/mo	Aubu-3610	Various sizes, 50/mo	Colu-3792
Odd sizes, 50/mo	Cozd-1363	Various sizes, 2 lg dmps/mo	Norf-1639
Various sizes, 30-50/mo	Frem-1431	Various sizes, 3-4 t/mo	Norf-3397
40x48, 4 way, 25/mo	Gene-2892	Various, 12/mo	Milf-4155
48x48, 30/yr	GrIs-1754	Various, waste, 10-20/wk	Hast-4161
40x48, ns	Hast-3160	Various sizes, 80 cu yds/wk	Colu-1998
40x48, 6-10/day	Xxxx-4113	Irreparable, 2 dmpr/mo	Omah-1584
10-20/wk	Linc-1171	48x36, Lg. quantities	Omah-2226
36x48 & 36x36,ns	Linc-3260	Various sizes, 20/wk	Omah-3414
400/mo	McCo-1284	Various sizes, 500/mo	York-2443
Various sizes, 27t/yr	Sewa-3994		

Drums, 55 gal--Generating

Plastic, ns	Norf-3487	Plastic, ns	Norf-3794
Plastic, 10/wk	Omah-2010	Plastic, 25/mo	Cret-3549
Plastic, 10/mo	Beat-2061	Plastic, 20-25/mo	WIND-3398
Plastic, 100/1x	SoSc-3219	Steel, 4/mo	Harv-3802
Plastic, 20-30/1x	York-4064		



Material Qty. ID#

Durables & Electronics

Seeking

Cell phones-working & non-working	All	Crete-4012
Central office switches	All	DUON-3530
Circuit boards	All	Kear-1101
Circuit boards-electronics	ns	Linc-4089
Copier-desktoip	1/1x	Linc-3588
Copier-desktoip	1/1x	Arca-2269
Electronics, integrated circuits, computer parts	All	FPIL-1224
Electronics & computer equip, for recycling	Lg. quantities	CHIC-3974
Electronic scrap for recycling	All	Omah-3459
Electronic scrap for recycling	Lg. quantities	Omah-4207
Electronic equip-working & non-working	ns	Linc-3376
Hardware, software	Any	Linc-3232
Micro film reader/printer	1/1x	Morr-3372
Pen plotter for CAD	1/1x	Hast-3717
Printers, ink jet	ns	Omah-2671
Printers-laser	1-2/1x	Omah-3630
Radio-base station & radios	1x	Beat-3602
Telephone & computer mainframe equip.-Scrap	All	Kear-1246

Computers-Seeking

486 or better, 2/1x	FtCa-3489	Parts, Any	Wave-4107
486 or better, laptop,lea/1x	Linc-3979	Pentium, printer, 1/1x	Crof-3494
486 or better, 10/mo	Omah-2609	Pentium w/ CD-Rom,1/1x	Elwo-4181
Computers, Lg. quantities	SPMN-3911	Pentium w/ CD-Rom, 10/1x	Linc-3478
Computer w/ printer	Omah-4143	Pentium, working	Omah-2622
Computer w/ Win98	Beat-3658	Pentium, working, Any	Linc-2728
Computers w/ Win95, ns	Linc-3888	Pentium, 6/1x	Linc-3425
Computer w/ Win95, 1/1x	Plai-4190	Pentium w/ CD-Rom	Omah-3589
Computers, Win95 or better	West-2585	Pentium	Omah-2688
Computer, Win95 or better	Linc-4154	Pentium, any	Dent-3666
Computers w/CD-Rom	Fair-3409	Pentium-complete	Omah-3651
Computers w/CD-Rom	Coza-3734	Pentium, 40/yr	O'Ne-3695
Computer, working, 1/1x	Lind-4179	Pentium-complete	Linc-3691
Computer equip, ongoing	Papi-3861	Pentium w/Win95, better	Xxxx-3089
Computer, media equip., ns	Beat-2331	Pentium, ns	Hend-2104
Computer w/ CD-Rom, ns	Kear-3804	Working & non-working	Linc-3886
Computer w/ CD-Rom, ns	Linc-1107	Working & non-working	Linc-3890
Computer w/ CD-Rom, 6/1x	Wake-2814	Working & non-working	Omah-3913
IBM comp., Pent, 20/qtr	Omah-3860	Working & non-working	Omah-2915
Laptop, 1/1x	Hart-4120	Working & non-working	Omah-3459
Laptop, 1/1x	Harr-4199	Working & non-working	Linc-4028
Laptop, 1/1x	Xxxx-4112	Working & non-working	STPA-4021
Parts, Any	Kear-1412		

Generating

Computers, 3 laptops, 3 Macs to sell	1x	Ains-3842
Computer, 486, needs network card	1/1x	Cent-4210
Printers-dot matrix	4/1x	Cent-4211

Metal

Seeking

Aluminum, steel, cans, cars	Lg. quantities	Omah-4144
Aluminum, tin	Lg. quantities	Hast-3917
Aluminum, tin	Lg. quantities	Omah-3906
Aluminum, tin	Lg. quantities	Beat-3921
Aluminum	Lg. quantities	NHIA-3924
Automobiles for scrap	ns	Linc-1953
Brass, copper, aluminum, lead	ns	Norf-1952
Copper-bearing items	ns	DUON-3882
Ferrous & nonferrous	All	Kear-1978

Material Qty. ID#

Ferrous & nonferrous	All	Linc-1955
Ferrous & nonferrous	All	Omah-2481
Ferrous & nonferrous	All	Omah-1425
Ferrous & nonferrous, copper, brass	ns	Linc-3874
Grindings, powders containing metal	25 t/wk	HILL-3954
Metal scrap-copper, zinc, nickel, aluminum, etc.	ns	DUON-3529
Metal scrap, copper, #1, #2, #3, insulated wire	ns	DUON-3881
Metal scrap-tin cans	Any	Omah-3931
Metal, scrap for recycling	Lg. quantities	CHIL-3827
Metal, scrap for recycling	ns	Linc-4159
Nonferrous	All	Kear-1099
Scrap metal	All	Hast-2602
Scrap steel, metal plate	ns	Hast-4000
Solder dross	All	Kear-1273
Stainless steel & nickel alloy	ns	DUON-3883
Tin, ferrous and nonferrous	ns	Cook-3453
Tin, aluminum	ns	Frem-4174
Wire	Lg. quantities	Omah-4206
Wire-insulated copper & aluminum	All	Kear-1268

Generating

Aluminum dust	7000-8000#/yr	Davi-3585
Grinding wheels	20,000#/mo	Xxxx-4114
Iron dust-Wheelabrator	277 t/yr	Xxxx-1205
Metal sludge/swarf-grinding	6-8 t/day	Xxxx-1206
Scrap from fireplace installation	ns	Linc-3801
Zamac and lead ingots, copper & alum. choppings	ns	DUON-3533

Oils & Waxes

Seeking

Grease-used, kitchen	All	Belv-1055
Oil-animal or vegetable	All	Belv-1056
Oil-used hydraulic, auto	Lg. quantities	SCIA-1087
Oil-used	ns	Alia-3932
Oil-used, non-synthetic	4,000 gal/yr	Omah-1946
Oil-used	Lg. quantities	Hast-3736
Wax-food grade	ns	Axte-4001

Other

Seeking

Art supplies	ns	Linc-3934
Art supplies	All	Omah-1460
Art supplies	ns	Linc-3668
Architectural antiques	ns	Linc-3503
Batteries-all	All	Linc-1954
Batteries	ns	Hast-3518
Batteries-from autos, sealed lead/acid	All	Linc-2491
Batteries	Lg. quantities	SPMN-3912
Binoculars	36/1x	Elwo-1410
Bird guides	36/1x	Elwo-1404
Canvas, art brushes, ink	ns	Omah-3902
Catalytic converters	ns	Kear-1209
Child development center materials	ns	Linc-3426
Craft items-paper, wood	ns	Linc-4048
Drums, any type of percussion instruments	1/1x	Elwo-3869
Educational materials, books, software	ns	Kear-3809
Equine materials-used bridles, horse blankets, etc.	ns	Kear-3808
Fluorescent lamps	All	SPMN-2173

Please visit our website at knb.org

Materials Exchange Disclaimer: Information provided through this database is supplied by the lister of the material. Keep Nebraska Beautiful is not responsible for any warranty, expressed or implied, as to the accuracy of the material description, the suitability of a particular use, or the saleability of any material offered through this service. It is the legal responsibility of each party to determine whether a listed material is a hazardous waste or a hazardous material. Both hazardous and solid wastes must be managed in accordance with all relevant regulations and laws. Keep Nebraska Beautiful reserves the right not to list a material, to delist a material, or to edit information provided by the listing party.

Material	Qty.	ID#
Fuel materials w/ high BTU value	25 t/wk	HILL-3953
Gases	All	PUGO-4069
Ion exchange resin	ns	ROIL-1531
Inkjet cartridges-fax, laser, copier	ns	Omah-4178
Laser, copier, inkjet cartridges-empty	Lg. quantities	MINN-3963
Mercury barometers	ns	Colu-3109
Mill scale, fly ash	25 t/wk	HILL-3955
Mirror scraps-4"x4" or larger	ns	Linc-4213
Potter's wheel	1/1x	Omah-3903
Reverse osmosis membranes-8" & 4"	ns	ROIL-1529
Rubber matting for outdoor playground	1/1x	Hart-4121
Textbooks, 1996 or newer	ns	Kear-4147
Wall maps & charts-current	ns	Omah-2099

Generating

Adhesive stock-pressure sensitive	Lg. quantities	DPMO-3365
Diatomaceous earth	100 t/mo	Blai-2015
Ink from newspapers	70 gal/yr	Waho-2093
Ion exchange resin (used cation anion, mixed bed)	ns	ROIL-1530
Power source platform, wood	ns	Omah-4224
Railcar hatch covers-fiberglass	ns	Linc-1793
Reverse osmosis membranes-used, 8"	ns	ROIL-1528
Silicones (sludge-like)	2000#/yr	Colu-1643
Steel grain bins	2/1x	Chap-3873
Tarp/sign material-vinyl	ns	Omah-4167
Wallpaper books-outdated	ns	Linc-3646
Wine bottles-blue, various sizes	200/mo	Raym-2382
Wood ash	1 t/wk	Cret-4123

Paint, Glass, Coatings

Seeking

Clear glass-small pcs	ns	Omah-3001
Float glass	ns	MUIA-1949
Glass-clear cullet	200 t/mo	DWIA-1950
Glass-recyclable	ns	Blai-2793
Glass-recyclable	any	Linc-3652
Glass-recyclable	ns	Linc-4160
Glass-recyclable	Lg. quantities	Beat-3919
Glass-recyclable	Lg. quantities	Omah-3929
Paint-yellow striping paint	ns	Beat-3600
Paint	ns	Rose-3959
Paint, oil based	250 gal/1x	Brow-3961
Waste powders-reclaim and spray	Varies	GRMI-1820
Virgin powder coatings	>50 lbs	GRMI-1818

Generating

Glass-broken mirror glass	30 t/mo	DWIA-1957
Paint-various colors	1500 gal/1x	Omah-1200
Paint-various colors & finishes	Lg. quantities	Omah-3591
Paint	30 gal/qtr	Linc-2867
Paint-latex	20 gal/1x	Linc-3256
Paint-blue (Diamond Vogel)	55 gal/1x	PEIA-2487
Powder coatings	ns	GRMI-1819
Powder paint	200#/mo	Kear-2636

Paper & Cardboard

(For Cardboard boxes see: Containers & Pallets)

Seeking

Books for children	ns	Linc-3878
Cardboard for binding	ns	Linc-3176
Cardboard	ns	GEIL-3937
Cardboard	ns	Hend-3012
Cardboard, office pak	ns	Frem-4173
Cardboard, envelopes-for school projects	ns	Linc-3660
Cardboard & paper, baled	ns	Omah-1814
Endrolls-paper for art projects	ns	Linc-4073
Envelopes-various sizes	50/mo	Xxxx-3985
Fine paper, corrugated, chipboard	Lg. quantities	Omah-3967

Material	Qty.	ID#
Matte board, newsprint, art supplies	ns	Linc-3880
Paper & cardboard, newspaper	Lg quantities	Beat-3920
Paper & cardboard	Any	Linc-2498
Paper & cardboard	Any	Blai-3904
Paper, fibers-for recycling	Any	NHIA-3946
Paper, waste, any grade	Lg. quantities	Wilc-3746
Paper-any grade waste	Any	MIFL-3830
Paper-plain white, 8.5x11	ns	Orle-4052
Paper-8.5x11, used on one side	ns	Hend-2105
Paper products for lessons and art projects	ns	Linc-3460
Paper & paper products	All	Frem-1934
Paper & cardboard	ns	Omah-1939
Paper, cardboard, office pak	ns	Linc-4158
Paper & paper products (books, stationery, etc.)	ns	Omah-1947
Paper-shredded	Varies	Beat-2108

Generating

Books-older	ns	Orle-3648
Cardboard-8'x12' pieces	300-400#/wk	Belv-2000
Cardboard mailing tubes, 36" long	ns	Chad-2131
Cardboard roll tubes	200-300/wk	Frem-1228
Cardboard-shredded, waxed & non-waxed	ns	Linc-4050
Cardboard	Lg. quantities	GrIs-3484
Cardboard-corrugated, waxed	5-10 t/mo	Frem-3370
Cardboard-flattened	ns	Omah-2434
Cardboard cores	500/yr	Waho-2092
Computer paper-shredded	Varies	Colu-1198
Encyclopedia sets-used	1 sets/1x	Orle-4053
Paper-one-sided, used	ns	Linc-4072
Paper-one-sided, used	ns	Omah-4145
Paper-bags, multi-layered	500#/wk	Plym-1867
Paper-shredded	ns	Axte-4133
Waxed paper-Kraft, brown, 20"x24"	ns	Kear-2237

Plastics

Seeking

#1, #2, plastic film	Lg. quantities	Linc-3653
#1 and #2 plastics	Lg. quantities	Wilc-3915
#1-7	All	MAFL-1424
#2 HDPE, possibly others	ns	MAIA-1948
Any	Lg. quantities	DRFL-3110
Any	Lg. quantities	MENY-2537
Bags-plastic, 55 gal	ns	Linc-3293
Bags-plastic	ns	Fill-4172
Bubble wrap/packing peanuts	ns	Linc-1248
Bubble wrap/packing peanuts	Lg. quantities	Edga-4004
Bubble wrap/foam wrap sheets	1 roll/mo	Xxxx-3984
Bubble wrap	Varies	Linc-3971
Bubble wrap/packing peanuts	ns	Linc-3833
Carpet pads-polyurethane foam	All	Omah-1623
HDPE-granulated, mixed colors	Varies	SIIA-2169
Moldable plastics	ns	Hast-3999
Nursery pots-plastic	ns	Beat-4034
PP/PE scrap, primarily diaper scrap	Lg. quantities	JACK-3884
Packing peanuts	30 cu ft/wk	Belv-2176
Packing peanuts	ns	Linc-3312
Packing peanuts	ns	Beat-2064
Plastics	ns	GEIL-3936
Plastics-recyclables	ns	Beat-3202
Plastics-recyclables	ns	BCKS-4176
Plastics-recyclables	ns	NHIA-3368
Plastics-recyclables	ns	Frem-4175
Plastics-recyclables	ns	Blai-3905
Plastics-recyclables	Lg. quantities	Linc-2499
Plastic-#4-Polyolefin resins	Lg. quantities	WINC-4038
Plastics-recyclable	Any	Omah-3930
Plastics, PVC, etc.	ns	DUON-3531
Plastics	Lg. quantities	Omah-3846
Plexiglass	Any	Rose-3572
Polyethylene-shrink wrap materials	ns	PAIL-1942



Material	Qty.	ID#
Styrofoam, packing peanuts	ns	PIDa-4057
Styrofoam, bubble wrap	ns	Kear-4184
Various	ns	CLIA-1936
Zip lock bags	ongoing	Linc-3850
Zip lock bags-10x14	Lg. quantities	Linc-1536
Zip lock bags	ongoing	Linc-3867
Zip lock bags	ns	Linc-1815

Generating

Acrylic scraps, sheets	Ongoing	Xxxx-3892
Adhesive films	ns	Colu-2334
Banding material-green	80 gal/wk	Omah-1796
Bubble wrap & foam wrap sheets (24"x24"x1/8")	ns	Linc-3228
Bubble wrap/peanuts	5 bxs/day	Linc-3805
Clear plastic liner on rolls	50,000#/yr	Vall-3857
Esterfoam & ethafoam, sizes vary	1 lg. dmp#r/mo	Hast-1636
Fiberglass rebar scraps-1' to 15' long	500#/wk	Sewa-3865
HDPE-post-industrial scrap, black	ns	Linc-2014
Matte liner .002 thick	17,000#/yr	Vall-3858
Nursery pots	ns	PIDa-4058
PP/PE-diaper scrap	600,000#/mo	WHIT-4039
Packing peanuts	150 gal bag/mo	Hast-1870
Packing peanuts	1 bag/wk	Linc-3696
Packing peanuts	6-12 bags/mo	Omah-1885
Plastic bags-various sizes	25,000/1x	Omah-4022
Plastic regrind-1/4" pellet	ns	Omah-2936
Polyethylene-sheets	ns	Kear-2236
Polypro bags	ns	Linc-3896
Polypropylene, polyester	300,000#/yr	Vall-3779
Polywrap plastic	20 drums/wk	Kear-2637
PVC-rigid white scrap	4 t/mo	Paxt-2068
PVC pipe-various sizes and colors	ns	Benn-2459
Shrink wrap	Lg. quantities	GrIs-3482
Spindles, spools	ns	NoPl-4182
Stretch wrap	20 drums/wk	Kear-2638
Styrofoam sheets	ns	Linc-4049
Styrofoam-rigid packing material	12-15 plts/1x	Kear-4165
Various	ns	Linc-4124
Zip-lock bags-3"x6"	300/mo	Linc-1521
Zip-lock bags-small	50/wk	Linc-1555
Zip lock bags	ns	Linc-4187

Rubber

Seeking

Inner tubes	All	CANA-1422
Matting-used	ns	Schu-2182
Rubber	Lg. quantities	Omah-3910
Rubber-cured or uncured, inner tubes	ns	DUON-3532
Tires & rubber scrap	All	DMIA-4194
Tires-used	ns	Linc-3635
Tires-used	All	Hast-1455

Generating

Cork rubber scraps	40,000#/mo	NeCi-2416
Crumb rubber-for sale	ns	DMIA-4195
Rubber product	3 t/day	Kear-2238
Scrap-cured	40,000#/wk	McCo-1283

Sand, Gravel, & Clay

Seeking

Clay, dirt, sand	ns	Colu-1974
Clay for art projects	ns	Omah-3901

REDUCE-REUSE-RECYCLE

Material	Qty.	ID#
Generating		
Blasting grit	80-100 t/yr	Linc-2343
Molding sand	Lg. quantities	Hast-3231
Used glass blasting material	Lg. quantities	Xxxx-3049

Surplus Equipment

(See also Durables & Electronics)

Seeking

Aircraft tow, gas-powered	ns	Beat-3601
Appliances-major	All	Frem-1909
Appliances	Any	Omah-2482
Art supplies, lumber, woodworking supplies	ns	Linc-3237
Atlas	1/1x	Linc-3633
Auxiliary plastic processing equip	1/1x	Hast-4128
Baler	1/1x	Omah-3933
Balers, recycling equipment	All	DRFL-4068
Banquet/conference tables, 6'-8'	10/1x	Hart-4122
Binders, 3-ring	ns	Linc-2183
Book rack-upright, for paperbacks	1/1x	Plym-4066
Bookshelves	ns/1x	Alli-3116
Bookshelves, shelving units	ns/1x	Spal-3650
Carousel projector	1/1x	Xxxx-3033
Chairs-office	2/1x	Omah-4087
Chairs-student, large	ns	Harr-4201
Children's scissors	30-40/1x	Norf-3615
Computer tables	4/1x	Linc-3632
Computer desks, chairs	ns	Linc-4153
Commercial beverage cooler, bar stools, chairs	ns	Kear-3741
Conveyors	ns	Linc-3662
Cubicle partitions	ns	Omah-3431
Dishes & glassware	ns	Linc-2397
Display racks for clothing	ns	Linc-4152
Easel	1/1x	Xxxx-3034
Electrical discharge machine	1/1x	Hast-4126
Employee lockers	2 sets/1x	Norf-3841
File cabinets, fire-proof	ns	Omah-2970
File cabinets, fire-proof	ns	Linc-4054
File cabinets-3 or 4 drawer	3/1x	Sewa-3997
File cabinets-2 or 4 drawer, letter size	ns	Linc-3552
File cabinet-2 or 4 drawer	6+/1x	Frem-3659
File cabinets	2/1x	Beat-2753
File cabinets-4 drawer	2/1x	Beat-2737
File cabinets, computer desks, office chairs	Varies	Beat-2625
Folding chairs, tables	1x	Crof-3758
Folding machine for brochures	1/1x	Plai-3951
Folding table & chairs	ns	Linc-4148
Furniture-bar stools, chairs, folding chairs, tables	ns	Kear-3916
Furniture-couches, coffee tables, etc.	ns	Linc-3558
Gym mats-for floor and wall	ns	Linc-3451
Hangers-plastic, for clothing	ns	Linc-3523
Hospital equipment-used	ns	Omah-4106
Household items (bedding, dishes, etc)	ns	Linc-3941
Household materials, clothing, furniture	ns	Linc-4061
Housewares, store fixtures, misc. durable goods	ns	Linc-3118
Lawnmower-riding or push	1/1x	Alli-3825
Lockers for schools	ns	Wyno-4164
Machine tools-later models	ns	Hast-4129
Medical equipment, used	ns	Norf-4185
Medical equipment, used	ns	Linc-4169
Microfilm reader/printer	1/1x	Ord-3163
Microform reader/printer	1/1x	LaVi-4202
Microwave	1/1x	Linc-4100
Molding machine-plastic injection	1/1x	Hast-4125
Nebraska flag	1/1x	Linc-3634
Office furniture	1x	Omah-3752
Office furniture-desks, file cabinets, etc.	ns	Linc-4084
Office furniture-file cabinets, chairs, etc	2/1x	Beat-2753
Office equip.-Desks, shelving, filing systems, etc.	ns	Hend-2107
Office waiting chairs	2/1x	Beat-3156
Plastic injection mold bases	1/1x	Hast-4127

Material	Qty.	ID#
Playground equipment	ns	Beat-3502
Pocket folders, binders	ns	Linc-3763
Podium, easels-for display	ns	Norf-2361
Printing presses, dry cleaner equipment, etc., outdated	All	Omah-2480
Round tables	ns	Norf-2573
School materials, equipment	ns	Omah-4003
Science counters for school	ns	Murd-4171
Science equipment-for schools	All	Pend-1225
Science lab furniture & equipment	ns	Omah-2098
Shelving	ns	Bart-3657
Shelving for books	1/1x	Plym-4067
Shelving, metal	ns	Linc-3879
Shelving units	ns	Kear-3812
Shop tools-for schools	ns	Hend-2106
Slide projector	1/1x	Spal-4156
Sound system-professional quality	1/1x	Linc-3644
Sports equipment-weight training, mats, hurdles	ns	Elba-3674
Stapler and pencil sharpener-heavy duty	1/1x	Linc-3348
Storage cabinet, 2 door	1/1x	Norf-2357
Student desks	ns	Harr-4200
Tables, chairs-small size for children	ns	Linc-3356
Time clock	1/1x	Loup-3810
Time clock	1/1x	Linc-3834
Time clock	1/1x	Kear-4095
TV, VCR	1/1x	GrIs-3918
TVs & VCRs	ns	Linc-4101
TV/VCR combination	1/1x	Crof-3870
Vacuum cleaner-commercial grade	1/1x	Crof-4222
Water testing equipment	ns	Linc-2442
Wheelchairs-push or electric	ns	Norf-3395
Wheelchairs, walkers, positioning chairs, etc.	ns	Coza-3105
Whiteboards for school	ns	Linc-4196
White goods and TVs	ns	Cook-3454
White goods	ns	Hast-1832
Woodworking and other shop tools	ns	Gibb-3665
Workout equipment-treadmills, airdynes, etc.	ns	Linc-3427

Generating

Camera-large, commercial, horizontal	1/1x	Linc-2754
Check endorser-good condition, Martin Yale 938	1/1x	Omah-3542
Conveyor solder reflow machine	1/1x	Linc-2761
Desks-elementary student	50/1x	Bart-3656
Desk-metal	1/1x	Linc-4105
Desks-wooden	3/1x	Cret-4134
Duncan system analyzer	1/1x	Linc-2768
Electrical conduit poles-2 1/2"x8'	2/1x	Omah-1617
Electric motors w/ pumps	4/1x	Omah-3104
File folders, interior	ns/1x	Linc-3960
Forms burster-good condition	1/1x	Omah-3543
Granite encoder table	1/1x	Linc-2762
Growth chamber	2/1x	Cret-2847
Hog feeders-1 round metal, 1 wooden shed	1each	CeBl-3498
Lazy susan form table	1/1x	Linc-2759
Light fixtures-mercury vapor	47/1x	Cret-4135
Light fixtures-incandescent	15/1x	Cret-4136
Microfiche readers	2/1x	Cent-4209
Rapiline 66 processor	1/1x	Linc-2755
Science counters	18/1x	Cret-3986
Screening machine-semi-automatic	1/1x	Linc-2758
Smoke detectors-24-volt system	160/1x	Linc-2756
Strobe horns (fire horns)	Lg. quantities	Linc-2765
Student desks	30/1x	Cret-3989
Test tube rack	1/1x	Cret-3987

Textiles & Leather

Seeking

Carpet, new or used	4 pieces/1x	Spal-2507
Carpet	ns	Kear-3742
Clothing	ns	Linc-3119
Clothing, linens, etc.	All	NHIA-4111
Clothing, used	ns	Norf-4186

Material	Qty.	ID#
Clothing—wearable, in good condition	All	CBIA-1962
Fabric/batting for quilts	ns	Linc-4017
Fabric scrap	25,000#/mo	BRNY-3769
Polyester fiberfill	Any	Lemo-3450
Quilt batting	ns	Axe-3854
Quilt batting-100% cotton	ns	Linc-3853
Vinyl or leather scrap	ns	Linc-3175
Web strapping-3/4" to 2"	ns	Milf-1547
Yarn and thread	Lg. quantities	Omah-3914

Generating

Canvas-scrap, small cotton	ns	Milf-1548
Cloths-cleaning	Lg. quantities	CBIA-1963
Clothing-wearable, mostly coats	Lg. quantities	CBIA-1964
Fabric, leather, foam scraps	ns	Linc-3863
Scrap material	Lg. quantities	CBIA-1961
Scraps & trimmings—carpet	Varies	GrIs-1254
Upholstery fabric	500-1000 yds.	Arap-2084
Vinyl-scrap, 11 different colors	Lg. quantities	Suth-2114

Wood

(For wood pallets see: Containers & Pallets)

Seeking

Barn wood-for stair tread & risers	ns	Linc-1518
Sawdust	ns	ANIA-3927
Wood scrap	Lg. quantities	Linc-3661
Wood scraps	ns	GEIL-1944
Wood scraps, pallets	ns	Linc-3829
Wood waste-all types, fee involved	Lg. quantities	GrIs-3704
Wood and pallet scrap	Lg. quantities	Omah-4036

Generating

Cable spools	10/mo	Omah-2540
Oak-rough or surfaced cut offs	2 semi lds/yr	Beat-1372
Plywood scraps	ns	Hast-1637
Particle board scrap	12-20 t/wk	Aubu-1511
Sawdust	ns/bags or loose	Norf-3940
Sawdust	5 brls/wk	Xxxx-3898
Wood chips & mulch	Lg. quantities	GrIs-3703
Wood mulch	Lg. quantities	Linc-3972
Wood scraps laminated	2 brls/day	Xxxx-3897
Wood scrap, pine	30,000#/mo	YASD-4212
Wood scraps, 2x4's	200/wk	Palm-2085
Wood scrap	5 dmp/mo	Omah-1801
Wood scraps, 4x4's	25/mo	Norf-1640
Wood scraps & sawdust	ns	NoPl-1134
Wooden spools	ns	Norf-4110

**THANKS TO YOU,
WE'RE CELEBRATING!**

*To date, the Materials Exchange
Program has....*

**Diverted 31.7 million pounds of
material from the landfill.**

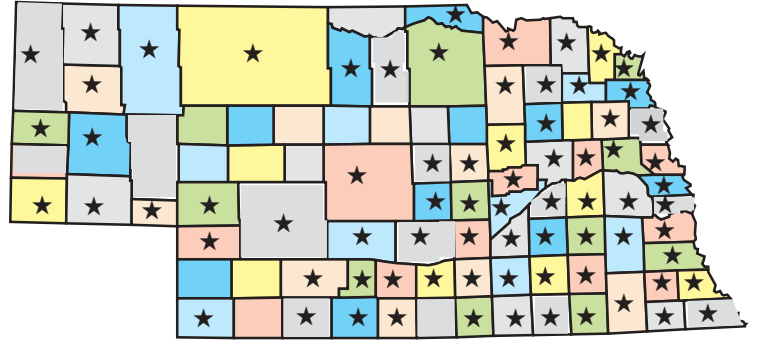
*Facilitated over 2,000 "matches" of
material.*

**Helped 1,400 participants save
over \$800,000 in disposal fees.**

The Nebraska Materials Exchange Program Wants You!

Currently 75 counties in Nebraska are involved with the Materials Exchange Program. Participating counties are denoted by stars on the map at right. Exchange representatives would like to have **ALL** counties in Nebraska actively participating in the program.

If you or someone you know hasn't joined yet, the Materials Exchange Program wants you! Call 800-486-4562 (or in Lincoln call 486-4622.)



The following counties currently have no participants in the Materials Exchange Program:

Arthur Blaine Franklin Garfield Hayes Hooker Logan McPherson Thomas
Banner Chase Garden Grant Hitchcock Keya Paha Loup Stanton Wheeler

#ID Codes

Panhandle

Alli- Alliance
 Baya- Bayard
 Chad- Chadron
 Craw- Crawford

Geri- Gering
 Harr- Harrison
 Kimb- Kimball
 Mitc- Mitchell

Morr- Morrill
 Rush- Rushville
 Scot- Scottsbluff
 Sidn- Sidney

West Central

Ains- Ainsworth
 Arap- Arapahoe
 Bart- Bartley
 Bass- Bassett
 Benk- Benkelman
 Brok- Broken Bow
 Brul- Brule
 Cozd- Cozad

Elwo- Elwood
 Gran- Grant
 John- Johnstown
 Lemo- Lemoine
 Lexi- Lexington
 LoPi- Long Pine
 Mayw- Maywood
 Maxw- Maxwell

McCo- McCook
 NoPl- North Platte
 Ogal- Ogallala
 Paxt- Paxton
 Suth- Sutherland
 Vale- Valentine

Northeast

Albi- Albion
 Alle- Allen
 Arli- Arlington
 Beem- Beemer
 Beld- Belden
 Blair- Blair
 Butt- Butte
 Clar- Clarkson
 Colu- Columbus
 DaCi- Dakota City
 Dodg- Dodge
 FtCa- Fort Calhoun
 Frem- Fremont
 Full- Fullerton
 Geno- Genoa

Hart- Hartington
 Hoop- Hooper
 Kenn- Kennard
 Laur- Laurel
 Leig- Leigh
 Lind- Lindsay
 Lyon- Lyons
 Madi- Madison
 Monr- Monroe
 Neli- Neligh
 Newc- Newcastle
 Niob- Niobrara
 Norf- Norfolk
 Nort- North Bend
 Osmo- Osmond

O'Ne- O'Neill
 Pend- Pender
 Plai- Plainview
 PCen- Platte Center
 Schu- Schuyler
 Scri- Scribner
 SoSc- So. Sioux City
 Wake- Wakefield
 Walt- Walthill
 Wash- Washington
 Waus- Wausa
 Wayn- Wayne
 WePo- West Point
 Winn- Winnebago
 Wyno- Wynot

Other

Xxxx- Confidential

Codes with all capital letters refer to cities located outside Nebraska. Please contact a Materials Exchange representative for more information.

Southeast

Adam- Adams
 Aubu- Auburn
 Beat- Beatrice
 Belv- Bellevue
 Benn- Bennet
 BlSp- Blue Springs
 Brow- Brownville
 CeBl- Cedar Bluffs
 Cere- Ceresco
 Cook- Cook
 Cret- Crete
 Davi- David City
 Dent- Denton
 Dill- Diller
 Doug- Douglas
 Eagl- Eagle
 Elmw- Elmwood
 Elkh- Elkhorn
 Exet- Exeter
 Fair- Fairbury

Fall- Falls City
 Fill- Filley
 Frie- Friend
 Gene- Geneva
 Gret- Gretna
 Hebr- Hebron
 Itha- Ithaca
 LaPl- LaPlatte
 LaVi- LaVista
 Linc- Lincoln
 Malc- Malcolm
 Mead- Mead
 Milf- Milford
 Murd- Murdock
 NeCi- Nebraska City
 Osce- Osceola
 Omah- Omaha
 Pana- Panama
 Papi- Papillion
 PaCi- Pawnee City

Peru- Peru
 Plat- Plattsmouth
 PIDa- Pleasant Dale
 Plym- Plymouth
 Prin- Princeton
 Raym- Raymond
 Roca- Roca
 Sewa- Seward
 Ster- Sterling
 Syra- Syracuse
 Tecu- Tecumseh
 Utic- Utica
 Vall- Valley
 Valp- Valparaiso
 Wave- Waverly
 Waho- Wahoo
 Water- Waterloo
 Weep- Weeping Water
 West- Weston
 York- York

Central

Alda- Alda
 Alma- Alma
 Arca- Arcadia
 Auro- Aurora
 Axte- Axtell
 Boel- Boelus
 Blue- Blue Hill
 Cent- Central City
 Chap- Chapman
 Dave- Davenport
 Desh- Deshler
 Doni- Doniphan

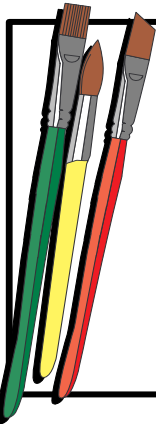
Elba- Elba
 Gibb- Gibbon
 Grls- Grand Island
 Harv- Harvard
 Hast- Hastings
 Hend- Henderson
 Hold- Holdrege
 Kear- Kearney
 Loup- Loup City
 Marq- Marquette
 Mind- Minden
 Ord- Ord

Here are the businesses and organizations who have recently become participants in the Nebraska Materials Exchange. Thanks to all our participants for helping us *Keep Nebraska Beautiful!*

A Plus Insurance Services	Fullerton Welding & Supply	Kamterter Products	PlastiCycle Corp.
Arnold/Ogallala Electronics Div.	Goodwill Industries-Lincoln	Kelley Bean Co.	Precision Lighting
Butler County Landfill	Grand Island Convention & Visitors Bureau	Koster Grain	Rieke Metals, Inc.
Cas Inc.		Midwest Box Company	Sapp Brothers Petro
Crawford Area Chamber	Henningsen Foods	Nebraska Family Support Network	Schneider Pallets
Eaton Corporation	Hope Center	Nebraska Molding	Stephens & Smith Const.
Farm & Home Company	Hubert Industries	Nebraska Truck & Equip.	Valley Crete
First Baptist Church	Indian School Foundation	Paraclypse	Village of Newcastle
Five Star Molding, Inc.	Jayhawk Boxes	Pioneer Overhead Door	Westmin Corp.



LISTING SPOTLIGHT
AVAILABLE MATERIALS



If you're looking for some unique materials for art projects, we have a number of listings that might interest you!

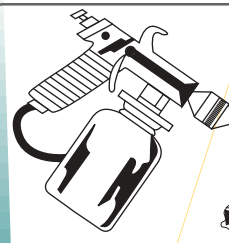
- Blue wine bottles
- Cardboard sheets-2 ft. x 8 ft.
- Burlap bags
- Latex paint-various colors
- Wood pieces
- Cotton canvas pieces



CONTAINERS ARE AVAILABLE

Are you currently buying containers for your business or home use? Contact the Exchange, and we may be able to match your needs with a **FREE** source for containers. Here are just a few examples.....

- Fiber Drums with lids*
- Buckets--3.5 gallon or 5 gallon*
- Totes-275 gallon, galvanized metal, on pallet*
- Kegs-4'x4'x4' hexagonal shape, cardboard*
- Tote bags-2,000# nylon or plastic*



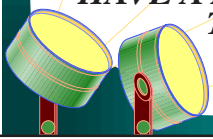
50 gallons of lacquer (various colors) for use in auto body repair. Available in the Omaha area.



"Super Sacks" in Central Nebraska!

These are heavy-duty sacks that are 4' square with an 8" diameter spout on the top and bottom. They also have 4 lift hooks on the top of each bag.

DO YOU HAVE A CANON COPIER? WE HAVE A LISTING FOR 2 CARTONS OF TONER #NP4335-4835.



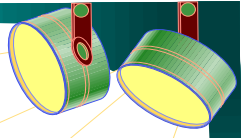
CALL THE EXCHANGE FOR FURTHER INFORMATION
402-486-4622



LISTING SPOTLIGHT
SEEKING MATERIALS



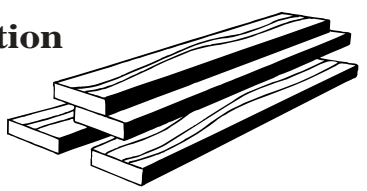
COMPUTERS WANTED FOR RECYCLING (MAY BE A PROCESSING FEE INVOLVED)



NEEDED BY NONPROFIT ORGANIZATIONS

- FILE CABINETS*
- DISPLAY RACKS FOR CLOTHING*
- OFFICE CUBICLE PARTITIONS*
- WHEELCHAIRS AND WALKERS*
- BOOKSHELVES*
- USED MEDICAL EQUIPMENT*
- ELECTRIC TYPEWRITERS*

A Lincoln construction company is seeking large quantities of plywood scraps.



Visit our website at www.knb.org. Listings are updated weekly. For the most recently listed items, just look for "Highlighted Items" in the current listings section of the Materials Exchange Program.

Nebraska Materials Exchange Program Application

The purpose of this form is to identify any wastes or surplus materials from one business, industry or school that could be utilized by another. The more information you provide, the more likely an exchange will occur. Please type or print. Questions? Call Keep Nebraska Beautiful at 1-800-486-4562. (In Lincoln call 486-4622)

Company/Organization

Contact _____ **Date** _____

Mailing Address _____

City _____ **State** _____ **ZIP+4** _____

Phone () _____ **Fax ()** _____

Email Address _____

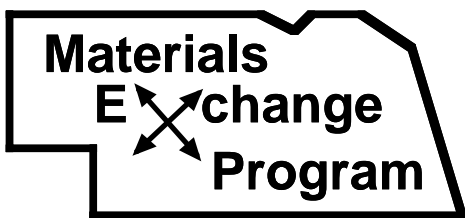
Note: Please complete all applicable items. If you have more than one item, please copy this form for each material, or attach a list of materials and the quantity of each one.

1. Is your company/organization a 501(c) 3 nonprofit organization? ____ Yes ____ No
2. Does your company have a newsletter? If yes, who is the contact? _____
3. To what trade associations do you belong? What trade magazines do you read? _____

4. May we release your name/address/phone to interested parties? ____ Yes ____ No
5. Are you SEEKING or GENERATING this material? ____ Seeking ____ Generating
6. Please Specify Material Here: *Generic name or primary usable constituent (If plastic, list mfg. & commercial name/grade #):

7. List quantity (in units: pounds, etc.): _____ **Per:** Day Week Month Quarter Year 1X only
8. Physical state: (if applicable) Liquid Slurry Solid Semi-solid Sludge Dust Cake Gas Other _____
9. Packaging: (circle one) Bulk Drums Dumpsters Gaylords Pallets Bales Other _____
10. General information as known: chemical composition, type of plastic, main ingredients, cost, pH, toxicity, reactivity, color, particle size, flash point, total solids, purchase date, industrial process generating this material, contaminants, etc.

11. Available to interested parties: (if applicable) ____ Sample ____ Lab Analysis ____ Independent Analysis
12. Please list any items your company would be willing to donate to schools.



Thank you for your interest in the Nebraska Materials Exchange Program. We will keep in contact with you regarding your application, as well as send our quarterly materials exchange newsletter, *The Link*.

Please mail or fax this form to:
 Keep Nebraska Beautiful,
 3201 Pioneers Blvd., Suite 306, Lincoln, NE 68502-5963
 Fax: (402) 486-4563
 Applications can also be submitted via the website at www.knb.org



Do Your Part To Help Keep Nebraska Beautiful! Become A Member Today!

Name _____
 Co./Org. _____
 Mailing Address _____
 City/State/Zip _____
 Phone: () _____ Fax: _____

- _____ Sustaining Member \$1000+
- _____ Sponsoring Member \$500-999/yr.
- _____ Supporting Member \$100-499/yr.
- _____ Chamber of Commerce \$50/yr.
- _____ Community-Pop. over 5,000 \$100/yr.
- _____ Community-Pop. under 5,000 \$50/yr.
- _____ Sr. Citizen/Student \$10/yr.
- _____ Non-profit/Civic Org./School \$30/yr.
- _____ Family \$20/yr. or \$45/3 yrs.
- _____ Individual \$15/yr. or \$30/3 yrs.

Your paid membership entitles you to several benefits. Please indicate the benefits you would like to receive below. Items not checked will not be sent and that part of your contribution will be used on educational programs.

- A KNB canvas shopping bag
- Quarterly mailings of the KNB newsletter *Waste Paper*
- Quarterly mailings of *The Link*
 - Via electronic email—address _____
- Information on workshops & conferences

For Sustaining, Sponsoring & Supporting Members Only:

- Corporate member wall plaque (or brass disc for renewals)
- A free copy of Keep America Beautiful's *Waste in the Workplace*

Total amount enclosed \$ _____

Send your check and membership form to:

Keep Nebraska Beautiful
3201 Pioneers Blvd., Suite 306
Lincoln, NE 68502-5963

Make Checks Payable to: Keep Nebraska Beautiful

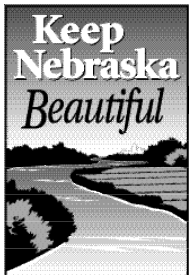
The Link is published quarterly by Keep Nebraska Beautiful, 3201 Pioneers Blvd., Suite 306, Lincoln, NE 68502.

Telephone: (402) 486-4562

Fax: (402) 486-4563

Web Site: <http://www.knb.org>

Funding for this program is provided by the Nebraska Waste Reduction and Recycling Incentive Fund, administered by the Nebraska Department of Environmental Quality, and through memberships and contributions of many of our participants.



Governor's Council to
 Keep Nebraska Beautiful
 3201 Pioneers Blvd., Suite 306
 Lincoln, NE 68502-5963